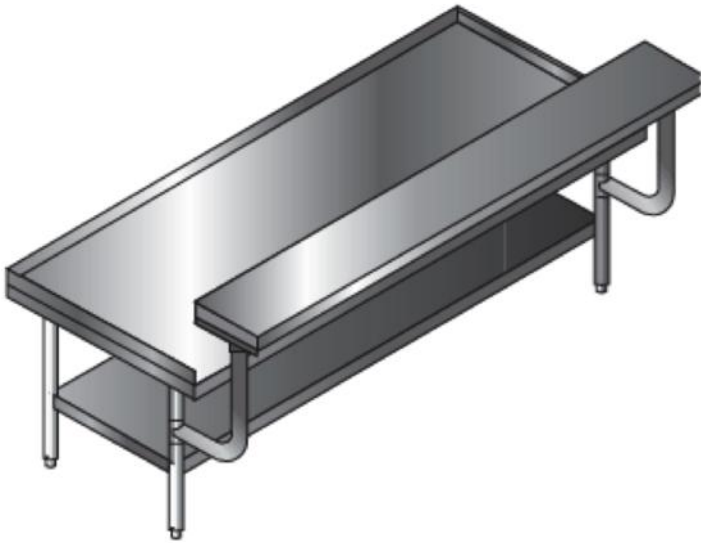


EQUIPMENT STANDS

HEAVY DUTY EQUIPMENT TABLES

UNIVERSAL
STAINLESS by
SPG



Unit shown with optional cutting board

ITEM # _____ MODEL # _____ QTY: ____
PROJECT: _____
OPTIONS: YES _____ NO _____

Standard Features & Benefits

- ◆ Available in Galvanized or Stainless Steel bases
- ◆ Table width is 30" (762mm). Working height is 24"
- ◆ Optional Stainless Steel and maple cutting boards available
- ◆ Rear and ends are turned up 2" to contain equipment
- ◆ Ends are hemmed, capped, and finished to conceal bracing
- ◆ Available in Standard (16 Gauge top) or Spec Line (14 Gauge top)



All SPG foodservice products meet NSF standards. For specific items, visit www.nsf.org.

For SPG's complete product menu, visit www.spgusa.com or call 877.503.4SPG (4774)

EXPECT MORE
SPG
STORAGE PRODUCTS GROUP

EQUIPMENT STANDS

HEAVY DUTY EQUIPMENT TABLES

Standard "N" Series Model No.	Spec "SL" Line Model No.	L x W		Approx. Wt.		Cubic Ft.
		(In.)	(mm.)	(Lbs.)	(Kg.)	
Stainless Bases						
ES-3024-S	ES-SL-3024-S	24 x 30	610 x 762	60	32	12
ES-3036-S	ES-SL-3036-S	36 x 30	914 x 762	70	36	18
ES-3048-S	ES-SL-3048-S	48 x 30	1219 x 762	80	43	25
ES-3060-S	ES-SL-3060-S	60 x 30	1524 x 762	95	45	31
ES-3072-S	ES-SL-3072-S	72 x 30	1829 x 762	100	55	37
ES-3096-S	ES-SL-3096-S	96 x 30	2438 x 762	150	68	49
ES-30108-S	ES-SL-30108-S	108 x 30	2743 x 762	180	82	58
ES-30120-S	ES-SL-30120-S	120 x 30	3048 x 762	210	95	65
Galvanized Bases						
ES-3024-G	ES-SL-3024-G	24 x 30	610 x 762	60	32	12
ES-3036-G	ES-SL-3036-G	36 x 30	914 x 762	70	36	18
ES-3048-G	ES-SL-3048-G	48 x 30	1219 x 762	80	43	25
ES-3060-G	ES-SL-3060-G	60 x 30	1524 x 762	95	45	31
ES-3072-G	ES-SL-3072-G	72 x 30	1829 x 762	100	55	37
ES-3096-G	ES-SL-3096-G	96 x 30	2438 x 762	150	68	49
ES-30108-G	ES-SL-30108-G	108 x 30	2743 x 762	180	82	60
ES-30120-G	ES-SL-30120-G	120 x 30	3048 x 762	210	95	71

Optional Cutting Boards for Equipment Tables Stainless Steel Tops and Maple Tops

Model No	L x W		Approx. Wt.	
	(In.)	(mm.)	(Lbs.)	(Kg.)
Stainless Steel Top				
ES-CBS-24	24 x 10	610 x 254	15	7
ES-CBS-36	36 x 10	914 x 254	20	9
ES-CBS-48	48 x 10	1219 x 254	25	11
ES-CBS-60	60 x 10	1524 x 254	30	14
ES-CBS-72	72 x 10	1829 x 254	35	16
Maple Top				
ES-CBM-24	24 x 10	610 x 254	20	9
ES-CBM-36	36 x 10	914 x 254	25	11
ES-CBM-48	48 x 10	1219 x 254	30	14
ES-CBM-60	60 x 10	1524 x 254	35	16
ES-CBM-72	72 x 10	1829 x 254	40	18

CONSTRUCTION

TOP:

All edges are die formed with corners welded to for one piece sanitary unit.

BRACING:

Two full length stainless steel C-channels for strength and sound deadening.

LEGS:

1-5/8" dia. 16 Gauge tubing with adjustable SS bullet feet. (all stands 60" and longer have 6 legs.

UNDER SHELF:

18 Gauge SS or Galvanized (-S or -G) notched and fully welded.

Stands available with casters. Specify "-C" at end of part name.

AMCO • Freestyle • ISS • Kelmax • LPI • Universal Stainless • Gillis-Jarke

SPG International, LLC
11230 Harland Drive NE
Covington, GA 30014
877-503-4SPG (4774)

www.spgusa.com

The best names in the business
all have one thing in common.

EXPECT MORE
SPG
STORAGE PRODUCTS GROUP

EQUIPMENT STANDS

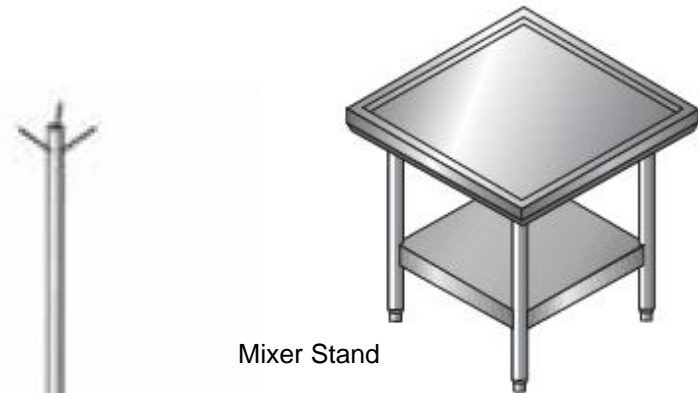
MIXER STANDS AND MOBILE EQUIPMENT TABLE

UNIVERSAL
STAINLESS by
SPG

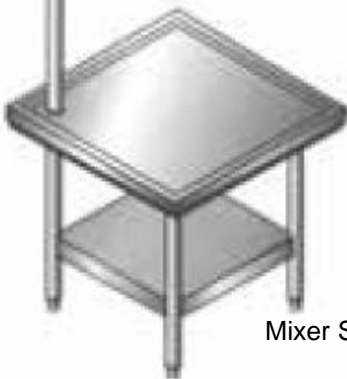
ITEM # _____ MODEL # _____ QTY: ____

PROJECT: _____

OPTIONS: YES _____ NO _____



Mixer Stand



Mixer Stands with Utensil Tree



Mobile Equipment Table

Standard Features & Benefits

- ◆ Available in Galvanized or Stainless Steel bases
- ◆ Top: 16 Gauge 300 Series Stainless Steel
- ◆ Legs: 1- 5/8 O.D. Stainless Steel tubing with adjustable bullet feet
- ◆ Undershelf: 18 Gauge Stainless Steel, notched to fit legs and fully welded
- ◆ Raised marine edge to contain equipment



All SPG foodservice products meet NSF standards. For specific items, visit www.nsf.org.

For SPG's complete product menu, visit www.spgusa.com or call 877.503.4SPG (4774)

EXPECT MORE
SPG
STORAGE PRODUCTS GROUP

EQUIPMENT STANDS

MIXER STANDS AND MOBILE EQUIPMENT TABLE

Mixer Stands

Model No.*	L x W		Approx. Wt.		Cubic Ft.
	(In.)	(mm.)	(Lbs.)	(Kg.)	
Stainless Steel Bases					
MS-24-S	24 x 24	610 x 610	50	23	12
MS-2430-S	24 x 30	610 x 762	60	27	15
MS-30-S	30 x 30	762 x 762	65	30	18
MS-3036-S	30 x 36	762 x 914	75	34	20
Galvanized Bases					
MS-24-G	24 x 24	610 x 610	50	23	12
MS-2430-G	24 x 30	610 x 762	60	27	15
MS-30-G	30 x 30	762 x 762	65	30	18
MS-3036-G	30 x 36	762 x 914	75	34	20

*For Utensil Tree option add -T to model number.

Mobile Equipment Table

Model No.	L x W		Approx. Wt.		Cubic Ft.
	(In.)	(mm.)	(Lbs.)	(Kg.)	
MET-2430	24 x 30	610 x 762	65	30	4

CONSTRUCTION

TOP:

Die formed with liquid retention edge on all four sides, corners welded to form sanitary one-piece unit.

BRACING:

Units have minimum (2) full length SS C-channel braces.

LEGS:

1-5/8" dia. 16 Gauge SS or Galvanized tubing with adjustable SS bullet feet and support sockets.

UNDER SHELF:

18 Gauge SS or Galvanized (-S or -G) fully welded to legs.

AMCO • Freestyle • ISS • Kelmax • LPI • Universal Stainless • Gillis-Jarke

SPG International, LLC
11230 Harland Drive NE
Covington, GA 30014
877-503-4SPG (4774)

www.spgusa.com

The best names in the business
all have one thing in common.

EXPECT MORE
SPG
STORAGE PRODUCTS GROUP