

# Foodservice, Supermarket & Hospitality Storage Systems



KELMAX ALUMINUM

[www.spgusa.com](http://www.spgusa.com)

EXPECT MORE



STORAGE PRODUCTS GROUP

## Kelmax Aluminum by SPG We manufacture great products at our facilities — and create efficient solutions for yours.

Strong, lightweight, corrosion resistant — the properties of aluminum make it the ideal material for a wide range of foodservice application. And nobody offers the foodservice industry a wider range of aluminum products than Kelmax.

Innovative in design and built for years of dependable service, Kelmax sets the standard for aluminum products that include everything from shelving systems and pan racks to storage and transportation equipment.

Kelmax isn't alone in the quest to provide more and better choices in food service equipment. In fact, it is only one of six SPG lines dedicated to serving the foodservice industry. Along with ISS, AMCO, Universal Stainless, Freestyle and LPI, SPG offers the most comprehensive line of foodservice equipment available anywhere.

At SPG, we match the quality of our products with superior service. That means fast, efficient delivery of your order — and it also means that we'll work with you to evaluate your

space, understand your needs, and uncover opportunities to maximize the efficiency and economy of your operation. Then, based on your input, we'll help you select the right products or create unique solutions, and incorporate them into a design that optimizes the functionality of your space, increases the efficiency of your staff, and maximizes the long-term value of your investment. You can always Expect More from SPG.

**For customer service and more information, contact us toll-free:**

**877.503.4SPG**  
(877.503.4774)

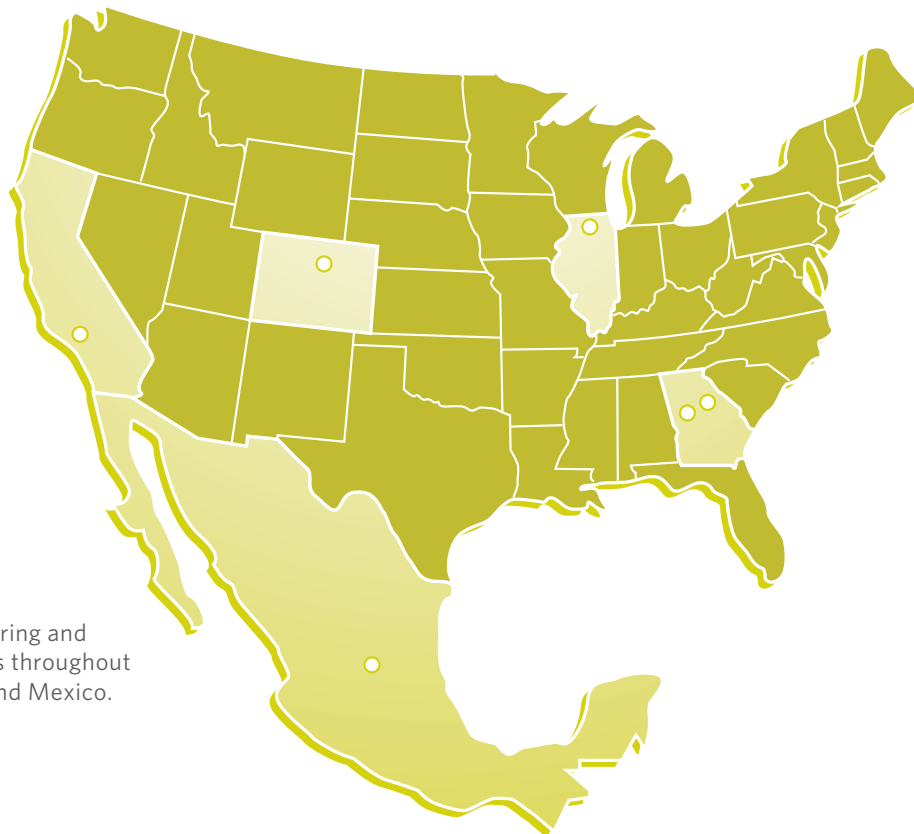
**SPGUSA.com**



Most of the foodservice products we manufacture meet NSF standards. For specific items, visit [www.nsf.org](http://www.nsf.org).

## Table of Contents

<b>4</b>	Overview	<b>29</b>	Food Carts
<b>5</b>	Cantilever Fixed Shelving Units	<b>30</b>	Platter Carts
<b>6</b>	Cantilever Frames & Adjustable Shelves	<b>31</b>	Dollies
<b>7</b>	Standard Fixed Shelving Units	<b>33</b>	Stocking Carts
<b>8</b>	Standard Posts & Adjustable Shelves	<b>35</b>	Flat Carts
<b>10</b>	Equipment Stands	<b>36</b>	Accessories
<b>11</b>	Wall Shelves	<b>37</b>	Casters
<b>12</b>	Pan Racks	<b>39</b>	Dunnage Racks
<b>19</b>	Enclosed & Versa Cabinets	<b>41</b>	Hand Trucks
<b>20</b>	Oven Racks	<b>42</b>	U Boats
<b>24</b>	Specialty Racks	<b>43</b>	Pallet Jacks & Mat Carts
<b>26</b>	Can Racks	<b>44</b>	Receiving Desks
<b>27</b>	Keg Storage Racks	<b>45</b>	Lockers
<b>28</b>	Produce Carts	<b>46</b>	Terms & Conditions



We have manufacturing and distribution facilities throughout the United States and Mexico.

## SHELVING

### Overview

- The Kelmax Shelving system is made of aluminum - which is lightweight and never rusts
- Several types of shelving systems are available: Cantilever, Standard Fixed Shelving and Adjustable Shelving
- The Cantilever system is ideal for increasing usable space in coolers and freezers. Since there are no front posts, storage is maximized and access is much easier
- Aluminum construction offers higher load ratings. Therefore, larger loads can be supported across a longer span of shelving
- Aluminum shelving is ideal in hot or caustic applications that might damage the coating of wire shelving



Kelmax Shelving is warranted to be free from manufacturing defects for five years from the date of shipment.

Kelmax aluminum products are warranted for life against rust and corrosion.



ALUMINUM CANTILEVER SHELVING

- Cantilever shelving is ideal for increasing usable space in coolers and freezers
- No front posts so cases and boxes can span from one unit to the next
- Freestanding unit; does not require bolting to the walls
- Available as Fixed Shelving Units, or order Frames and Adjustable Shelves separately to create custom units
- Choose from 3 types of shelves

Shelving Type	Description	Load Capacity Per Shelf (Lbs.)	Application
Channel	4" wide channels	1,500	Provides extra strength for large or small items. Allows for air circulation.
Tubular	4 1/2" spacing between vertical tubes	1,500	For storage of cases or large boxes.
Solid	Reinforced tubing under the skin	900	For storage of small items. Helps contain spills.

Cantilever Fixed Shelving Units

- All-welded aluminum construction
- Includes frame and 2 - 4 fixed shelves
- Shelves are fixed and are not adjustable or removable
- Overall height is 72"
- Available in two shelf depths: 20" and 24"
- Front legs do not extend past the bottom shelf for safety
- Tubular bottom shelf is standard with all kits, and is easily removed without the use of tools for cleaning
- Clearance between fixed shelves:
  - Two shelf unit: 59"
  - Three shelf unit: 28"
  - Four shelf unit: 18 1/4"
- Maximum load capacity per shelving unit is 3,000 lbs
- Freight class 400



Channel Shelf Unit  
ACFCS3624-3



Left: Solid Shelf Unit  
ACFSS3620-4

Right: Channel Shelf Unit  
ACFCS3620-4

Channel Shelf Model No.	Tubular Shelf Model No.	Solid Shelf Model No.	L x D x H		Weight	
			(In.)	(mm.)	(Lbs.)	(Kg.)
<b>2 Shelf Units</b>						
ACFCS3620-2	—	ACFSS3620-2	36 x 20 x 72	914 x 508 x 1829	49	22
ACFCS3624-2	—	ACFSS3624-2	36 x 24 x 72	914 x 610 x 1829	55	25
ACFCS4820-2	—	ACFSS4820-2	48 x 20 x 72	1219 x 508 x 1829	55	25
ACFCS4824-2	—	ACFSS4824-2	48 x 24 x 72	1219 x 610 x 1829	59	27
ACFCS6020-2	ACFS6020-2	ACFSS6020-2	60 x 20 x 72	1524 x 508 x 1829	65	29
ACFCS6024-2	ACFS6024-2	ACFSS6024-2	60 x 24 x 72	1524 x 610 x 1829	66	30
<b>3 Shelf Units</b>						
ACFCS3620-3	ACFS3620-3	ACFSS3620-3	36 x 20 x 72	914 x 508 x 1829	55	25
ACFCS3624-3	ACFS3624-3	ACFSS3624-3	36 x 24 x 72	914 x 610 x 1829	64	29
ACFCS4820-3	ACFS4820-3	ACFSS4820-3	48 x 20 x 72	1219 x 508 x 1829	69	29
ACFCS4824-3	ACFS4824-3	ACFSS4824-3	48 x 24 x 72	1219 x 610 x 1829	75	31
ACFCS6020-3	ACFS6020-3	ACFSS6020-3	60 x 20 x 72	1524 x 508 x 1829	79	36
ACFCS6024-3	ACFS6024-3	ACFSS6024-3	60 x 24 x 72	1524 x 610 x 1829	86	39
<b>4 Shelf Units</b>						
ACFCS3620-4	ACFS3620-4	ACFSS3620-4	36 x 20 x 72	914 x 508 x 1829	68	31
ACFCS3624-4	ACFS3624-4	ACFSS3624-4	36 x 24 x 72	914 x 610 x 1829	72	33
ACFCS4820-4	ACFS4820-4	ACFSS4820-4	48 x 20 x 72	1219 x 508 x 1829	84	38
ACFCS4824-4	ACFS4824-4	ACFSS4824-4	48 x 24 x 72	1219 x 610 x 1829	92	41
ACFCS6020-4	ACFS6020-4	ACFSS6020-4	60 x 20 x 72	1524 x 508 x 1829	97	44
ACFCS6024-4	ACFS6024-4	ACFSS6024-4	60 x 24 x 72	1524 x 610 x 1829	106	48

## ALUMINUM CANTILEVER SHELVING

### Cantilever Frames and Adjustable Shelves

- Frames and adjustable shelves sold separately
- Tubular base dunnage shelf is standard, and is easily removed without the use of tools for cleaning
- Up to 5 additional shelf positions. Shelves can be added or removed without tools
- Available in two shelf depths: 20" and 24"
- Clearance between adjustable shelves is 9<sup>5</sup>/<sub>8</sub>"
- Overall height is 72"
- Maximum load capacity per shelving unit is 2,800 lbs

#### How to Order:

1. Choose frame size
2. Choose tubular base dunnage shelf that matches frame size (Optional)
3. Choose type of shelf (Channel, Tubular, or Solid) and shelf size
4. Specify number of shelves ( 1 - 5 )

Note: 24" shelves are not suggested for 20" frames.

### Cantilever Frames

- Freight class 400

Model No.	L x D x H		Weight	
	(In.)	(mm.)	(Lbs.)	(Kg.)
<b>20" Deep Shelving Frame</b>				
ACAF3620	36 x 20 x 72	914 x 508 x 1829	49	22
ACAF4820	48 x 20 x 72	1219 x 508 x 1829	55	25
ACAF6020	60 x 20 x 72	1524 x 508 x 1829	61	27
<b>24" Deep Shelving Frame</b>				
ACAF3624	36 x 24 x 72	914 x 610 x 1829	64	29
ACAF4824	48 x 24 x 72	1219 x 610 x 1829	75	31
ACAF6024	60 x 24 x 72	1524 x 610 x 1829	86	39



### Tubular Base Dunnage Shelf

- Freight class 70

Model No.	L x D		Weight	
	(In.)	(mm.)	(Lbs.)	(Kg.)
<b>20" Deep Shelves</b>				
ACB3620	36 x 20	914 x 508	10	4
ACB4820	48 x 20	1219 x 508	12	5
ACB6020	60 x 20	1524 x 508	14	6
<b>24" Deep Shelves</b>				
ACB3624	36 x 24	914 x 610	11	5
ACB4824	48 x 24	1219 x 610	13	6
ACB6024	60 x 24	1524 x 610	15	7

### Cantilever Shelves

- Freight class 70

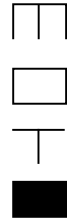
Channel Shelf Model No.	Tubular Shelf Model No.	Solid Shelf Model No.	L x D		Weight	
			(In.)	(mm.)	(Lbs.)	(Kg.)
<b>20" Deep Shelves</b>						
ACACS3620	ACA3620	ACAS3620	36 x 20	914 x 508	10	4
ACACS4820	ACA4820	ACAS4820	48 x 20	1219 x 508	12	5
ACACS6020	ACA6020	ACAS6020	60 x 20	1524 x 508	14	6
<b>24" Deep Shelves</b>						
ACACS3624	ACA3624	ACAS3624	36 x 24	914 x 610	11	5
ACACS4824	ACA4824	ACAS4824	48 x 24	1219 x 610	13	6
ACACS6024	ACA6024	ACAS6024	60 x 24	1524 x 610	15	7

ALUMINUM STANDARD SHELVING

Standard Fixed Shelving Units

- All welded aluminum shelving ships set up
- Includes 4 posts and 2 to 4 fixed shelves
- Overall height is 60" for 2 and 3-shelf units and 72" for 4-shelf unit
- Mitered top for extra strength
- Available in two shelf depths: 20" and 24"
- Clearance between shelves:
  - Two shelf unit: 48½"
  - Three shelf unit: 22½"
  - Four shelf unit: 18½"
- Choose from 4 types of shelves
- Freight class 400

Shelving Type	Description	Load Capacity Per Shelf (Lbs.)	Application
Channel	4" wide channels	1,500	Provides extra strength for large or small items. Allows for air circulation.
Tubular	4½" spacing between vertical tubes	1,500	For storage of cases or large boxes.
T - Bar	2" spacing between bars	1,500	For storage that requires perpendicular support
Solid	Reinforced tubing under the skin	1,500	For storage of small items. Helps contain spills.



Tubular Shelf Model No.	T-Bar Shelf Model No.	Channel Shelf Model No.	Solid Shelf Model No.	L x W x H		Weight	
				(In.)	(mm.)	(Lbs.)	(Kg.)
<b>2-Shelf Units</b>							
AFS3620-2	AFSTB3620-2	AFCS3620-2	AFSS3620-2	36 x 20 x 60	914 x 508 x 1524	28	13
AFS3624-2	AFSTB3624-2	AFCS3624-2	AFSS3624-2	36 x 24 x 60	914 x 610 x 1524	30	14
AFS4820-2	AFSTB4820-2	AFCS4820-2	AFSS4820-2	48 x 20 x 60	1219 x 508 x 1524	33	15
AFS4824-2	AFSTB4824-2	AFCS4824-2	AFSS4824-2	48 x 24 x 60	1219 x 610 x 1524	37	17
AFS6020-2	AFSTB6020-2	AFCS6020-2	AFSS6020-2	60 x 20 x 60	1524 x 508 x 1524	38	17
AFS6024-2	AFSTB6024-2	AFCS6024-2	AFSS6024-2	60 x 24 x 60	1524 x 610 x 1524	43	20
<b>3-Shelf Units</b>							
AFS3620-3	AFSTB3620-3	AFCS3620-3	AFSS3620-3	36 x 20 x 60	914 x 508 x 1524	38	17
AFS3624-3	AFSTB3624-3	AFCS3624-3	AFSS3624-3	36 x 24 x 60	914 x 610 x 1524	42	19
AFS4820-3	AFSTB4820-3	AFCS4820-3	AFSS4820-3	48 x 20 x 60	1219 x 508 x 1524	46	21
AFS4824-3	AFSTB4824-3	AFCS4824-3	AFSS4824-3	48 x 24 x 60	1219 x 610 x 1524	51	23
AFS6020-3	AFSTB6020-3	AFCS6020-3	AFSS6020-3	60 x 20 x 60	1524 x 508 x 1524	54	24
AFS6024-3	AFSTB6024-3	AFCS6024-3	AFSS6024-3	60 x 24 x 60	1524 x 610 x 1524	61	28
<b>4-Shelf Units</b>							
AFS3620-4	AFSTB3620-4	AFCS3620-4	AFSS3620-4	36 x 20 x 72	914 x 508 x 1829	48	22
AFS3624-4	AFSTB3624-4	AFCS3624-4	AFSS3624-4	36 x 24 x 72	914 x 610 x 1829	54	24
AFS4820-4	AFSTB4820-4	AFCS4820-4	AFSS4820-4	48 x 20 x 72	1219 x 508 x 1829	59	27
AFS4824-4	AFSTB4824-4	AFCS4824-4	AFSS4824-4	48 x 24 x 72	1219 x 610 x 1829	66	30
AFS6020-4	AFSTB6020-4	AFCS6020-4	AFSS6020-4	60 x 20 x 72	1524 x 508 x 1829	70	32
AFS6024-4	AFSTB6024-4	AFCS6024-4	AFSS6024-4	60 x 24 x 72	1524 x 610 x 1829	79	36



Channel Shelf Unit AFCS6024-3



Mobile Channel Shelf Unit AFCS6024-3/MHD

Accessories for Standard Fixed Shelving Kits

Model No.	Description
/M	5" Poly U Plate Casters (Set), 2 Swivel and 2 Fixed
/MHD	Heavy Duty 6" x 2" Polyolefin Casters w/ Brake (Set), 2 Swivel and 2 Fixed
/ADJ	Adjustable Feet Set

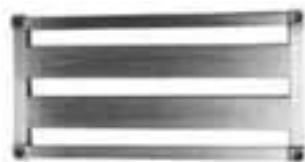
## ALUMINUM STANDARD SHELVING

### Standard Posts and Adjustable Shelves

- Create a custom aluminum shelving unit
- Choose from 6 posts and 4 types of shelves in 4 widths
- Shelves are adjustable and interchangeable in the same width and length

Shelving Type	Description	Load Capacity Per Shelf (Lbs.)	Application
Channel	4" wide channels	2,100	Provides greatest support and versatility. Use in coolers, freezers, and storerooms. Easy to clean.
Tubular	Heavy wall tubular construction	2,000	Ideal for use in coolers, especially when storing cases or large boxes.
T - Bar	2" spacing between bars	1,500	For storage that requires perpendicular support.
Solid	.063" thick aluminum skin with marine edge. 24" wide shelf is reinforced with 2 tubes on underside. 18" and 20" shelves are reinforced with one tube on underside.	900	For storage of small items. Helps contain spills. Great in coolers.

Solid Shelf Model No.	Tubular Shelf Model No.	T-Bar Shelf Model No.	Channel Shelf Model No.	L x W (In.)	L x W (mm.)	Weight (Lbs.)	Weight (Kg.)
<b>18" Wide Shelves</b>							
AASR1836	AAS1836	AATB1836	AACH1836	36 x 18	914 x 457	8	4
AASR1848	AAS1848	AATB1848	AACH1848	48 x 18	1219 x 457	11	5
AASR1860	AAS1860	AATB1860	AACH1860	60 x 18	1524 x 457	13	6
<b>20" Wide Shelves</b>							
AASR2036	AAS2036	AATB2036	AACH2036	42 x 20	1067 x 508	9	4
AASR2048	AAS2048	AATB2048	AACH2048	54 x 20	1372 x 508	12	5
AASR2060	AAS2060	AATB2060	AACH2060	72 x 20	1829 x 508	18	8
<b>24" Wide Shelves</b>							
AASR2436	AAS2436	AATB2436	AACH2436	36 x 24	914 x 610	9	4
AASR2448	AAS2448	AATB2448	AACH2448	48 x 24	1219 x 610	13	6
AASR2460	AAS2460	AATB2460	AACH2460	60 x 24	1524 x 610	15	7
AASR2472	AAS2472	AATB2472	AACH2472	72 x 24	1829 x 610	18	8
<b>30" Wide Shelves</b>							
—	AAS3036	—	AACH3036	36 x 30	914 x 762	19	9
—	AAS3048	—	AACH3048	48 x 30	1219 x 762	21	10



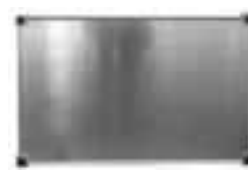
Channel Shelf  
AACH



T-Bar Shelf  
AATB



Tubular Shelf  
AAS



Solid Shelf  
AASR



Standard Posts and Adjustable Shelves (cont.)

Posts

Model No.	Height		Weight	
	(In.)	(mm.)	(Lbs.)	(Kg.)
<b>Poles</b>				
AAP12	12	305	1	0.5
AAP48	48	1219	3	1.5
AAP54	54	1372	3	1.5
AAP68	68	1727	3½	2
AAP76	76	1930	4	2
AAP84	84	2134	5	2.5



Accessories / Kelmax

Casters and Feet

Model No.	Description	Weight	
		(Lbs.)	(Kg.)
/5S	5" x 1½" Poly U Swivel Stem Casters (Each)	3	1.5
/5SBK	5" x 1½" Poly U Swivel Stem Casters w/ Brake (Each)	3	1.5
/ADJ	Adjustable Feet (Each)	1	0.45
/ADJ-F	Flanged Adjustable Feet (Each)	1	0.45



Swivel Stem Caster /5S



Adjustable Foot /ADJ

Clips

- Connect multiple shelving sections together in between posts when additional stability is needed

Model No.	Description	Weight	
		(Lbs.)	(Kg.)
AAS Clip	Clips Solid	½	—
AAT Clip	Clips Tubular	½	—



AAS Clip



AAT Clip

U-Braces

- For improved stability at the bottom of shelving units, or use as package stops between shelves

Model No.	L x D		Weight	
	(In.)	(mm.)	(Lbs.)	(Kg.)
AASUB2048	20 x 48	508 x 1219	5	2.5
AASUB2060	20 x 60	508 x 1524	5	2.5
AASUB2448	24 x 48	610 x 1219	6	2.5
AASUB2460	24 x 60	610 x 1524	6	2.5



U-Brace AASUB

EQUIPMENT STANDS

**Grill Stands**

- All aluminum construction designed to hold most countertop cooking equipment
- Available as stationary or mobile units
- 24" and 30" deep tops with three 1½" lips up on three sides: 24" high
- Bottom shelf is standard
- Casters are optional. Add suffix /MBK to model number
- Ships knockdown, sets up easily with an allen wrench
- Freight class 70



Mobile Grill Stand

Model No.*	D x W x H		Wt.	
	(In.)	(mm.)	(Lbs.)	(Kg.)
AAES2436/BS	24½ x 36½ x 24	622 x 927 x 610	35	16
AAES2448/BS	24½ x 48½ x 24	622 x 1232 x 610	40	18
AAES2460/BS	24½ x 60½ x 24	622 x 1537 x 610	45	20
AAES3036/BS	30½ x 36½ x 24	775 x 927 x 610	40	18
AAES3048/BS	30½ x 48½ x 24	775 x 1232 x 610	45	20
AAES3060/BS	30½ x 60½ x 24	775 x 1537 x 610	50	23

\*Optional casters. Add suffix to model number.

Suffix	Description
/MBK	Casters with 2 Brakes

**Slicer Covers/Mixer Covers**

- For better sanitation
- Heavy 12 gauge vinyl
- Standard size fits most units including Berkel® and Hobart® slicers
- Meets HACCP requirements



Slicer Cover SC1612

Model No.	Description	L x D x H		Wt.	
		(In.)	(mm.)	(Lbs.)	(Kg.)
<b>Slicer Covers - Fits Globe 3500/4500 Manual</b>					
SC3500		20 x 28 x 21	508 x 711 x 533	3	1.5
<b>Slicer Covers - Fits Berkel Bizerba Hobart 1612 and 1712</b>					
SC1612		20 x 28 x 21	508 x 711 x 533	3	1.5
<b>Mixer Covers</b>					
MC20	20 Quart	26 x 21 x 23	660 x 533 x 584	5	2.5
MC30	30 Quart	37 x 23 x 23	940 x 584 x 584	7	3.5
MC40	40 Quart	40 x 29 x 56	508 x 711 x 1422	8	3.5



Mixer Cover MC40

### Channel Wall Shelves

- Aluminum channel construction
- Load capacity is dependent on type of wall and mounting hardware
- Freight class 70

Model No.	# Of Channels	L x D		Wt.	
		(In.)	(mm.)	(Lbs.)	(Kg.)
ASWC1236	1	36 x 12	914 x 305	7	3
ASWC1248	1	48 x 12	1219 x 305	8	4
ASWC1260	1	60 x 12	1524 x 305	9	4
ASWC1836	2	36 x 18	916 x 457	13	6
ASWC1848	2	48 x 18	1219 x 457	16	7
ASWC1860	2	60 x 18	1524 x 457	19	9
<b>Optional Pot Hook Holder with Pot Hooks - Add Suffix</b>					
/PR36	For 36" units; comes with 4 hooks				
/PR48	For 48" units; comes with 6 hooks				
/PR60	For 60" units; comes with 8 hooks				



Channel Wall Shelf  
ASWC1836

### Heavy Duty Solid Wall Shelves

- All welded solid wall shelves for heavier duty applications
- Load capacity is dependent on type of wall and mounting hardware
- Freight class 70

Model No.	L x D		Wt.	
	(In.)	(mm.)	(Lbs.)	(Kg.)
ASWS1224	24 x 12	610 x 305	6	2
ASWS1236	36 x 12	914 x 305	7	3
ASWS1248	48 x 12	1219 x 305	8	4
ASWS1260	60 x 12	1524 x 305	9	4
ASWS1836	36 x 18	916 x 457	13	6
ASWS1848	48 x 18	1219 x 457	16	7
ASWS1860	60 x 18	1524 x 457	19	9
<b>Optional Pot Hook Holder with Pot Hooks - Add Suffix</b>				
/PR36	For 36" units; comes with 4 hooks			
/PR48	For 48" units; comes with 6 hooks			
/PR60	For 60" units; comes with 8 hooks			



Heavy Duty Solid Wall Shelf with  
Pot Hook Holder and Pot Hooks  
ASWS1860/PH60

### Solid Wall Shelves-Knock Down

- Solid aluminum construction
- Load capacity is dependent on type of wall and mounting hardware
- Unit ships knock down

Model No.	L x D		Wt.	
	(In.)	(mm.)	(Lbs.)	(Kg.)
<b>Aluminum-Wall Shelves Knockdown</b>				
ASWS1224/KD	24 x 12	610 x 305	6	2
ASWS1236/KD	36 x 12	914 x 305	7	3
ASWS1248/KD	48 x 12	1219 x 305	8	4
ASWS1260/KD	60 x 12	1524 x 305	9	4
<b>Aluminum Microwave Shelves</b>				
ASWS1824/KD	24 x 18	610 x 457	11	5
ASWS2424/KD	24 x 24	610 x 610	13	6



Solid Wall Shelf  
ASWS1236/KD



Microwave Shelf  
ASWS1824/KD

PAN RACKS

**Aluminum Standard Duty Pan Racks**

- Heavy duty runners, .078" thick runners
- Reinforced gussets standard, 5" Poly U swivel stem casters
- Lifetime guarantee against rust
- Freight class 300



Reinforced Socket



Aluminum Standard Duty Pan Rack  
APR2018-3

Model No.	Tray Cap	Spacing (In.)	D x L x H (In.)	D x L x H (mm.)	Wt. (Lbs.) (Kg.)	
<b>End Load</b>						
APR1018-6	10	6	26 x 21 x 70	660 x 533 x 1778	36	16
APR1218-5	12	5	26 x 21 x 70	660 x 533 x 1778	38	17
APR1518-4	15	4	26 x 21 x 70	660 x 533 x 1778	39	18
APR1818-3/65	18	3	26 x 21 x 64	660 x 533 x 1626	44	20
APR2018-3	20	3	26 x 21 x 70	660 x 533 x 1778	45	22
APR3018-2	30	2	26 x 21 x 70	660 x 533 x 1778	51	23
<b>Side Load</b>						
APR1026-6	10	6	18 x 29 x 70	737 x 457 x 1778	30	14
APR1226-5	12	5	18 x 29 x 70	737 x 457 x 1778	35	16
APR1526-4	15	4	18 x 29 x 70	737 x 457 x 1778	37	18
APR1826-3/65	18	3	18 x 29 x 64	737 x 457 x 1626	38	17
APR2026-3	20	3	18 x 29 x 70	737 x 457 x 1778	41	19

**Aluminum Half Size Pan Racks**

- Available with 304 Series 16 gauge Stainless Steel Top,
- Aluminum Top or Poly Top
- 5" Poly U swivel stem casters
- Freight Class 300



Aluminum Half Size Pan Rack with Open Top  
APR1018-3/38



Aluminum Half Size Pan Rack with Stainless Steel Top  
APR1018-3/38/SST

**Half Size Pan Rack Options**

Model No.	Description
/AT	Aluminum Top For Half Size Racks
/SST	Stainless Steel Top Shelf
/PT	Poly Cutting Board Top
/SB	Solid Base

**Economy Knockdown Pan Racks**

- Knockdown great for light duty
- Reinforced construction at stress points
- All models are End Load only
- 5" swivel stem casters
- Freight class 70



Economy Knock Down Pan Rack  
APRE2018-3/KDA

### Stainless Steel Pan Racks

- 304 16 gauge stainless steel construction
- For the toughest jobs
- Optional 304 16 gauge stainless steel top; add suffix /SST
- 5" Poly U swivel stem caster
- Freight Class 200

Model No.	Tray Cap	Spacing (In.)	D x L x H (In.) (mm.)		Wt. (Lbs.) (Kg.)	
<b>End Load</b>						
SPR1018-6	10	6	26 x 21 x 69	660 x 533 x 1753	80	37
SPR1218-5	12	5	26 x 21 x 69	660 x 533 x 1753	82	37
SPR1518-4	15	4	26 x 21 x 69	660 x 533 x 1753	85	39
SPR1818-3/65	18	3	26 x 21 x 65	660 x 533 x 1651	88	40
SPR2018-3	20	3	26 x 21 x 69	660 x 533 x 1753	91	41
SPR3018-2	30	2	26 x 21 x 69	660 x 533 x 1753	110	50
<b>Side Load</b>						
SPR1226-5	12	5	29 x 18 x 69	737 x 457 x 1753	87	40
SPR2026-3	20	3	29 x 18 x 69	737 x 457 x 1753	110	50



Stainless Steel Pan Rack  
SPR2018-3

### Stainless Steel Half Size Pan Racks

- Half size units are 38" work height
- Units work as well as spanner table
- Freight Class 200

Model No.	Tray Cap	Spacing (In.)	D x L x H (In.) (mm.)		Wt. (Lbs.) (Kg.)	
<b>Open Top</b>						
SPR1018-3/38	10	3	26 x 21 x 38	660 x 533 x 965	48	22
SPR618-5/38	6	5	26 x 21 x 38	660 x 533 x 965	42	19
<b>Stainless Steel Top</b>						
SPR1018-3/38/SST	10	3	26 x 21 x 38	660 x 533 x 965	63	28
SPR618-5/38/SST	6	5	26 x 21 x 38	660 x 533 x 965	57	26

### Stainless Steel Pan Rack Options

Model No.	Description
/PCSS	Plate Casters Lot For Stainless Steel Racks - 5" x 1 1/2" Poly U Swivel Plate Casters
/BK	Casters With Locking Brakes (2)
/VB	Vertical Bumpers
/TGSS	Tray Guard Stainless Rack
/SST	Stainless Steel Top Shelf
/PT	Poly Cutting Board Top

PAN RACKS

Aluminum Heavy Duty Racks

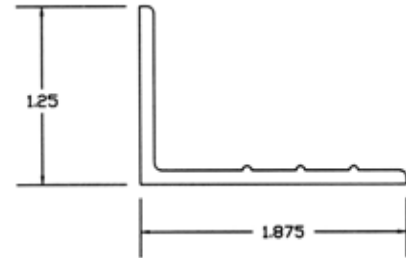
- .100" thick runner
- All welded construction
- 5" Poly U swivel plate casters
- 1 1/4" heavy wall uprights
- Heavy duty wheel channel
- Freight Class 300



Model No.	Tray Cap	Spacing (In.)	D x L x H		Wt.	
			(In.)	(mm.)	(Lbs.)	(Kg.)
APR1818-3/65ED	18	3	26 x 21 x 65	660 x 533 x 1651	66	30
APR2018-3ED	20	3	26 x 21 x 69	660 x 533 x 1753	70	32



Aluminum Heavy Duty Rack  
APR2018-3ED/VB



Aluminum Pan Rack Options

- For standard duty and heavy duty pan racks

Model No.	Description
/PCAA	Plate Casters Lot For Aluminum Racks - 5" x 1 1/2" Poly U Swivel Plate Casters
/BK	Locking Brakes (2)
/VB	Vertical Bumpers
/B	Corner Bumpers (4) - (Only Available With Plate Casters On Solid Base)
/SBCB	Solid Base Continuous Bumper
/TGAL	Tray Guard Aluminum Rack
/SB	Solid Base

Model No.	Tray Cap	Spacing (In.)	D x L x H (In.) (mm.)		Wt. (Lbs.) (Kg.)	
APRUE1218-5	12	5	27 x 21 x 69	686 x 533 x 1753	47	21
APRUE1118-5/65	11	5	27 x 21 x 65	686 x 533 x 1651	45	20
APRUE1818-3/65	18	3	27 x 21 x 65	686 x 533 x 1651	58	26
APRUE2018-3	20	3	27 x 21 x 69	686 x 533 x 1753	62	28



Standard Duty Universal Pan Rack  
APRUE1218-5

### Universal Pan Racks for Oval Trays

- Rack designed to hold 18" x 26" pans, 12" x 20" steam table pans and oval trays
- Runners are 6<sup>3</sup>/<sub>8</sub>" wide
- Unit holds the trays from the bottom
- 65" high unit can be used in most roll-in boxes
- Holds 2 steam table pans per shelf
- Unit has 1<sup>1</sup>/<sub>4</sub>" square tubular uprights and 5" x 1<sup>1</sup>/<sub>2</sub>" plate casters standard
- Freight Class 300



Universal Pan Rack for Oval Trays  
APRUW1023-6/520

### Adjustable Universal Pan Racks

- Adjustment on 1<sup>1</sup>/<sub>2</sub>" centers
- Heavy duty channel uprights
- Holds oval tray sheet pans, roasting pans and steam table pans on 6<sup>3</sup>/<sub>8</sub>" wide runners
- 5" Poly U plate casters: 2 swivel w/brakes and 2 rigid
- Two sizes: 65" or 71" high
- Solid base standard
- Freight Class 300

Model No.	Tray Cap	Spacing (In.)	D x L x H (In.) (mm.)		Wt. (Lbs.) (Kg.)	
APR-AU-65	12	3	28 x 26 <sup>7</sup> / <sub>8</sub> x 65	711 x 685 x 1651	105	48
APR-AU-69	13	3	28 x 26 <sup>7</sup> / <sub>8</sub> x 71	711 x 685 x 1651	110	50
<b>Additional Runners</b>						
/ADJRUNNER	PER EACH					



Adjustable Universal Pan Rack  
APR-AU-69

**PAN RACKS**

**Insert Racks for Freezers and Coolers**

- Fits most reach-ins with 21" door clearance
- Available Knockdown (/KD)
- Standard runner holds 18" x 26" Pans (APR Models)
- Universal runner holds both Steam Table Pans 12" x 20" and Sheet Pans 18" x 26" (APRUE Models)
- Freight Class 300; Knockdown Freight Class 70



Model No.	Tray Cap	Spacing (In.)	(In.)	D x L x H (mm.)	Wt. (Lbs.) (Kg.)	
<b>For Half Size Units</b>						
APR718/23NC/KD	7	3	24 x 21 x 23	610 x 533 x 584	14	6.5
APRUE718/23NC	7	3	24 x 21 x 23	610 x 533 x 584	14	6.5
<b>For Full Size Units</b>						
APR1618/51NC/KD	16	3	24 x 21 x 51	610 x 533 x 1295	26	12
APRUE1618/51NC	16	3	24 x 21 x 51	610 x 533 x 1295	26	12



Insert Rack for Full Size Unit APR1618/51NC

**Steam Table Pan Racks**

- Holds steam table pans only
- 5" Poly U swivel stem casters
- Freight Class 300

Model No.	Tray Cap	Spacing (In.)	(In.)	D x L x H (mm.)	Wt. (Lbs.) (Kg.)	
<b>Holds 1 Pan Per Ledge By The Side Edge</b>						
APSTR-15	15	4	26 x 17 x 69	660 x 406 x 1753	29	13
APSTR-20	20	3	26 x 17 x 69	660 x 406 x 1753	33	15
APSTR-10/38	10	3	26 x 17 x 38	660 x 406 x 965	24	11
<b>Holds 2 Pans Deep Per Ledge By The Ends - Side Load</b>						
APSTRD-12	24	5	26 x 24 x 69	660 x 610 x 1753	30	13.5
APSTRD-20	40	3	26 x 24 x 69	660 x 610 x 1753	40	13.5
<b>Holds Steam Table Pans</b>						
APSTRDW-20	40	3	26 x 29 x 69	660 x 737 x 1753	37	17



APSTR-15



APSTRDW-20

Steam Table Pan Racks

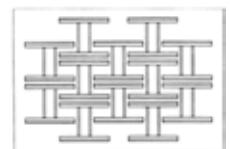
**Nesting Pan Racks**

- Saves space by 40%
- Save labor by pushing 6 empty units at one time
- Heavy duty construction
- 5" Poly U swivel stem casters
- Freight Class 300

Model No.	Tray Cap	Spacing (In.)	(In.)	D x L x H (mm.)	Wt. (Lbs.) (Kg.)	
<b>End Load</b>						
APRN1218-5	12	5	26 x 21 x 69	660 x 533 x 1753	37	17
APRN1818-3/65	18	3	26 x 21 x 69	660 x 533 x 1651	45	20.5
APRN2018-3	20	3	26 x 21 x 69	660 x 533 x 1753	48	22
<b>Side Load</b>						
APRN2026-3	20	3	18 x 29 x 69	457 x 737 x 1753	47	21.5



Nest 10 Racks in the space of 6 Standard Racks





### Channel Pan Racks

- Holds the pans by the edge
- Great for use in bakery
- Allows for varied spacing in the same rack
- 5" Poly U swivel stem casters
- Freight Class 300

Model No.	Tray Cap	Spacing (In.)	D x L x H		Wt.	
			(In.)	(mm.)	(Lbs.)	(Kg.)
<b>End Load</b>						
ACHR2018/38	20	1½	27 x 21 x 38	686 x 540 x 965	31	14
ACHR4018	40	1½	27 x 21 x 69	686 x 540 x 1752	42	19
<b>Side Load</b>						
ACHR4026	40	1½	27 x 21 x 69	686 x 540 x 1752	42	19



Channel Pan Rack ACHR4018

### Rack Covers for Standard Pan Racks

- Clear 12 gauge PVC vinyl with reinforced top
- Flexible to zero degrees
- Custom sizes available
- Preserve freshness and sanitation of the product and reduce dehydration
- 2 full zippers
- Meets HACCP requirements

Model No.	D x L x H		Wt.	
	(In.)	(mm.)	(Lbs.)	(Kg.)
<b>For 69" (1753MM) High Racks - End Load</b>				
RC62/RT	28 x 23 x 64	711 x 584 x 1575	4½	2
<b>For 65" (1651MM) High Racks - End Load</b>				
RC58/RT	28 x 23 x 64	711 x 584 x 1575	4½	2
<b>For 38" (965MM) High Racks - End Load</b>				
RC33/RT	28 x 23 x 33	711 x 584 x 838	3½	1.5



Rack Cover for Standard Pan Rack RC62/RT

### Freezer Rack Covers

- Two heavy duty self correcting zippers
- Reinforced tear resistant material
- Ships via UPS

Model No.	D x L x H		Wt.	
	(In.)	(mm.)	(Lbs.)	(Kg.)
<b>For 69" (1753MM) High Racks - End Load</b>				
FRC62	28 x 23 x 64	711 x 584 x 1575	5	2.5
<b>For 65" (1651MM) High Racks - End Load</b>				
FRC58	28 x 23 x 58	711 x 584 x 1473	5	2.5
<b>For 38" (965MM) High Racks - End Load</b>				
FRC33	28 x 23 x 33	711 x 584 x 838	4½	2



Freezer Rack Cover FRC62

PAN RACKS

**Solid Side "Speed Racks"**

- Increases speed and versatility with openings on both ends
- Can hold poly food boxes as well as sheet pans
- Tray spacing on 1" or 1½" spacing
- 5 x 1½" plate casters; APRSS units have expandable stem casters
- Freight Class 300

Model No.	Tray Spacing Cap	Spacing (In.)	D x L x H (In.) (mm.)		Wt. (Lbs.) (Kg.)	
<b>Solid Top &amp; Solid Bottom End Load - 1.5" Spacing</b>						
APSR1618/32	16	1½	28 x 22 x 32	711 x 559 x 813	54	24.5
APSR3218	32	1½	28 x 22 x 56	711 x 559 x 1422	78	35
APSR4018	40	1½	28 x 22 x 68	711 x 559 x 1727	80	36
<b>Open Top &amp; Open Bottom End Load - 1.5" Spacing</b>						
APRSS3618	36	1½	28 x 22 x 62	711 x 559 x 1575	55	25
APRSS4018	40	1½	28 x 22 x 68	711 x 559 x 1728	60	27
<b>Open Top &amp; Open Bottom End Load - 1.5" Spacing</b>						
APRSS5418-1	54	1	28 x 22 x 62	711 x 559 x 1575	55	25
APRSS6018-1	60	1	28 x 22 x 68	711 x 559 x 1728	60	27



Solid Side "Speed Rack"  
APSR4018

### Enclosed Cabinets

- Great for areas where cabinets will be in public view such as hospital hallways or dining halls
- Tray spacing on 1" or 1½" spacing
- All welded units with double pan top
- Door opens 270 degrees on stainless steel hinges
- Stainless steel gravity latch is drilled for padlock
- Heavy duty models (ECH) have reinforced center supports and 5" x 2" casters standard
- Freight Class 300



Enclosed Cabinet EC4018

Model No.	Tray Cap	Spacing (In.)	D x L x H (In.) (mm.)		Wt. (Lbs.) (Kg.)	
<b>End Load - 1.5" Spacing</b>						
EC1618	16	1½	28 x 22 x 32	711 x 559 x 813	80	36
EC2418	24	1½	28 x 22 x 44	711 x 559 x 1118	95	43
EC3218	32	1½	28 x 22 x 56	711 x 559 x 1422	95	43
EC4018	40	1½	28 x 22 x 68	711 x 559 x 1727	105	48
<b>End Load - Heavy Duty - 1.5" Spacing</b>						
ECH4018	40	1½	28 x 22 x 68	711 x 559 x 1727	115	52
<b>Side Load - 1.5" Spacing</b>						
EC3226	32	1½	20 x 31 x 56	508 x 787 x 1422	92	42
<b>End Load - Heavy Duty - 1" Spacing</b>						
ECH6018-1	60	1	28 x 22 x 68	711 x 559 x 1728	115	52



1" Tray Guides are Non-Tilt Design

### Standard Versa Cabinets

- Very versatile non-insulated cabinets. Holds sheet pans, steam table pans, 14" x 18" and 18" x 26" trays and round trays
- Holds trays by the bottom, similar to pan racks
- The ECMU models are extra deep to hold two 14" x 18" trays
- Modular decking allows for varying runner spacing. Cabinets can be configured to hold your trays, based on standard spacing of 3", 4", 5", and 6"
- Units are welded with double pan top
- Door opens 270 degrees on stainless steel hinges
- Gravity latch is drilled for padlock
- Freight Class 300

Model No.	Tray Cap.	Spacing (In.)	D x L x H (In.) (mm.)		Wt. (Lbs.) (Kg.)	
<b>End Load - 1 7/8" Runners - Sheet Pans</b>						
ECM1218-5	12	5	29 <sup>5</sup> / <sub>8</sub> x 21 <sup>3</sup> / <sub>8</sub> x 72 <sup>1</sup> / <sub>4</sub>	762 x 559 x 1835	133	60
ECM2018-3	20	3	29 <sup>5</sup> / <sub>8</sub> x 21 <sup>3</sup> / <sub>8</sub> x 72 <sup>1</sup> / <sub>4</sub>	762 x 559 x 1835	150	60
<b>End Load - 3 1/4" Runners - Steam Table Pans, Sheet Pans, 14" x 18" Trays</b>						
ECMU1218-5	12	5	29 <sup>5</sup> / <sub>8</sub> x 21 <sup>3</sup> / <sub>8</sub> x 72 <sup>1</sup> / <sub>4</sub>	762 x 559 x 1835	133	60
ECMU2018-3	20	3	29 <sup>5</sup> / <sub>8</sub> x 21 <sup>3</sup> / <sub>8</sub> x 72 <sup>1</sup> / <sub>4</sub>	762 x 559 x 1835	150	60



Versa cabinet with optional clear door

### Enclosed Cabinet and Versa Cabinet Options

Model No.	Description
/BK	Caster Brakes
/DL	Open Door Latch
/CB	Full Perimeter Bumper
/6S	6" Heavy Duty Poly U Swivel Plate Casters
/CD	Clear Door

**OVEN RACKS**

- Oven racks are available for a number of oven types, including Revent, Baxter, Adamatic, Lucks and Bakers Aid
- For Hobart oven racks contact factory
- Racks accommodate three common lift types
- Units include rack, lift and high temperature casters
- Overall rack height is specified for each model on following pages

**Kelmax Oven Rack Guide**



Additional Lift Types  
Roller Top  
Pin Bottom



Side Load

End Load



High Temperature Caster

Kelmax has the best High Temperature Oven Caster on the market.

### C-Lift Oven Racks for Adamatic and Revent

- Rack height is 73"
- Available in aluminum and stainless steel
- Freight class 300

Adamatic Aluminum Model No.	Revent Aluminum Model No.	Adamatic Stainless Steel Model No.	Revent Stainless Steel Model No.	No Of Runners	Spacing (In.)
<b>Side Load</b>					
APR1026-6/AORC	APR1026-6/RORC	SPR1026-6/AORC	SPR1026-6/RORC	10	6
APR1226-5/AORC	APR1226-5/RORC	SPR1226-5/AORC	SPR1226-5/RORC	12	5
APR1526-4/AORC	APR1526-4/RORC	SPR1526-4/AORC	SPR1526-4/RORC	15	4
APR2026-3/AORC	APR2026-3/RORC	SPR2026-3/AORC	SPR2026-3/RORC	20	3
<b>End Load</b>					
APR1018-6/AORC	APR1018-6/RORC	SPR1018-6/AORC	SPR1018-6/RORC	10	6
APR1218-5/AORC	APR1218-5/RORC	SPR1218-5/AORC	SPR1218-5/RORC	12	5
APR1518-4/AORC	APR1518-4/RORC	SPR1518-4/AORC	SPR1518-4/RORC	15	4
APR2018-3/AORC	APR2018-3/RORC	SPR2018-3/AORC	SPR2018-3/RORC	20	3
<b>Double Side Load</b>					
APRD0826-7/AORC	APRD0826-7/RORC	SPRD0826-7/AORC	SPRD0826-7/RORC	8	7
APRD1026-6/AORC	APRD1026-6/RORC	SPRD1026-6/AORC	SPRD1026-6/RORC	10	6
APRD1226-5/AORC	APRD1226-5/RORC	SPRD1226-5/AORC	SPRD1226-5/RORC	12	5
APRD1526-4/AORC	APRD1526-4/RORC	SPRD1526-4/AORC	SPRD1526-4/RORC	15	4
APRD2026-3/AORC	APRD2026-3/RORC	SPRD2026-3/AORC	SPRD2026-3/RORC	20	3



C-Lift

### A-Lift Oven Racks for Revent

- Rack height is 71½"
- Available in aluminum and stainless steel
- Freight class 300

Revent Aluminum Model No.	Revent Stainless Steel Model No.	No. Of Runners	Spacing (In.)
<b>Side Load</b>			
APR1026-6/ROR	SPR1026-6/ROR	10	6
APR1226-5/ROR	SPR1226-5/ROR	12	5
APR1526-4/ROR	SPR1526-4/ROR	15	4
APR2026-3/ROR	SPR2026-3/ROR	20	3
<b>End Load</b>			
APR1018-6/ROR	SPR1018-6/ROR	10	6
APR1218-5/ROR	SPR1218-5/ROR	12	5
APR1518-4/ROR	SPR1518-4/ROR	15	4
APR2018-3/ROR	SPR2018-3/ROR	20	3
<b>Double Side Load</b>			
APRD0826-7/ROR	SPRD0826-7/ROR	8	7
APRD1026-6/ROR	SPRD1026-6/ROR	10	6
APRD1226-5/ROR	SPRD1226-5/ROR	12	5
APRD1526-4/ROR	SPRD1526-4/ROR	15	4
APRD2026-3/ROR	SPRD2026-3/ROR	20	3



A-Lift

OVEN RACKS

**B-Lift Oven Racks for Baxter**

- Rack height is 69<sup>3</sup>/<sub>8</sub>"
- Specify if the oven is a single (Advantage I Oven) or Double (Advantage II Oven)
- Available in aluminum and stainless steel
- Freight class 300



B-Lift

Baxter Aluminum Model No.	Baxter Stainless Steel Model No.	No. Of Runners	Spacing (In.)	Oven Type
<b>Side Load</b>				
APR1026-6/BXORB	SPR1026-6/BXORB	10	6	S / D
APR1226-5/BXORB	SPR1226-5/BXORB	12	5	S / D
APR1526-4/BXORB	SPR1526-4/BXORB	15	4	S / D
APR2026-3/BXORB	SPR2026-3/BXORB	20	3	S / D
—	SPR3026-2/BXORB	30	2	S / D
<b>End Load</b>				
APR1018-6/BXORB	SPR1018-6/BXORB	10	6	S / D
APR1218-5/BXORB	SPR1218-5/BXORB	12	5	S / D
APR1518-4/BXORB	SPR1518-4/BXORB	15	4	S / D
APR2018-3/BXORB	SPR2018-3/BXORB	20	3	S / D
<b>Double Side Load</b>				
APRD0826-7/BXORB	SPRD0826-7/BXORB	8	7	D
APRD1026-6/BXORB	SPRD1026-6/BXORB	10	6	D
APRD1226-5/BXORB	SPRD1226-5/BXORB	12	5	D
APRD1526-4/BXORB	SPRD1526-4/BXORB	15	4	D
APRD2026-3/BXORB	SPRD2026-3/BXORB	20	3	D

**Aluminum B-Lift Oven Racks for Bakers Aid and Lucks**

- Rack heights: Bakers Aid 69<sup>3</sup>/<sub>4</sub>" and Lucks 70<sup>3</sup>/<sub>4</sub>"
- Freight class 300

Bakers Aid Model No.	Lucks Model No.	No. Of Runners	Spacing (In.)
<b>Side Load</b>			
APR1026-6/BAORB	APR1026-6/LORB	10	6
APR1226-5/BAORB	APR1226-5/LORB	12	5
APR1526-4/BAORB	APR1526-4/LORB	15	4
APR2026-3/BAORB	APR2026-3/LORB	20	3
<b>End Load</b>			
APR1018-6/BAORB	APR1018-6/LORB	10	6
APR1218-5/BAORB	APR1218-5/LORB	12	5
APR1518-4/BAORB	APR1518-4/LORB	15	4
APR2018-3/BAORB	APR2018-3/LORB	20	3
<b>Double Side Load</b>			
APRD0826-7/BAORB	APRD0826-7/LORB	8	7
APRD1026-6/BAORB	APRD1026-6/LORB	10	6
APRD1226-5/BAORB	APRD1226-5/LORB	12	5
APRD1526-4/BAORB	APRD1526-4/LORB	15	4
APRD2026-3/BAORB	APRD2026-3/LORB	20	3

**Pin Bottom Oven Racks for Bakers Aid  
(for Bottom Carousel Style Ovens)**

- Rack height is 68<sup>7</sup>/<sub>8</sub>"
- Freight class 300

Bakers Aid Model No.	No. Of Runners	Spacing (In.)
<b>Side Load</b>		
APR1026-6/BAOR-PIN	10	6
APR1226-5/BAOR-PIN	12	5
APR1526-4/BAOR-PIN	15	4
APR2026-3/BAOR-PIN	20	3
APR3026-2/BAOR-PIN	30	2
<b>End Load</b>		
APR1018-6/BAOR-PIN	10	6
APR1218-5/BAOR-PIN	12	5
APR1518-4/BAOR-PIN	15	4
APR2018-3/BAOR-PIN	20	3

**Oven Rack Options**

Model No.	Description
CSW415HT	4" x 1 <sup>1</sup> / <sub>2</sub> " High Temp Oven Caster
415HT	High Temp Wheel Only
CSW415HT/SS	4" x 1 <sup>1</sup> / <sub>2</sub> " High Temp Oven Caster On Stainless Steel Rig
/TGAL	Tray Guard Aluminum Rack



High Temp Oven Caster on Stainless Steel Rig  
CSW415 HT/SS

**SPECIALTY RACKS**

**Poly Food Box Racks**

- Ideal for transporting and holding Poly Food Boxes from the service area to the kitchen
- Poly food box racks are great in the cooler to help sort products
- Some soft side boxes will not work in these racks
- 1" square tubular aluminum construction
- 5" Poly U swivel stem casters
- Freight Class 300

Model No.	Tray Cap	Spacing (In.)	D x L x H		Wt.	
			(In.)	(mm.)	(Lbs.)	(Kg.)
APBH-8	8	6	26 x 21 x 69	660 x 533 x 1753	31	14
APBH-15	15	4	26 x 21 x 69	660 x 533 x 1753	36	16
APBH-20	20	3	26 x 21 x 69	660 x 533 x 965	42	19
APBH-5/38	5	6	26 x 21 x 38	660 x 533 x 965	26	12



Poly Food Box Rack  
APBH-8

**Glass Racks**

- Glass racks hold 20" x 20" glass and dish racks
- Ideal for transporting glassware and china from the service area to the kitchen
- Handle large loads in one trip to minimize breakage and physical injury
- 1" square tubular aluminum construction
- 5" Poly U swivel stem casters
- Freight Class 300

Model No.	Tray Cap	Spacing (In.)	D x L x H		Wt.	
			(In.)	(mm.)	(Lbs.)	(Kg.)
APR0820-7	8	7	20 x 23 x 69	508 x 584 x 1753	28	13
APR0620-9	6	9	20 x 23 x 69	508 x 584 x 1753	26	12



Glass Rack  
APR0620-9-TG



### Tray Retrieval Racks

- Designed for nursing homes and self bussing operations
- Full 30" deep unit keeps the trays inside the frame of the rack
- Designed to allow clearance of most glasses/cups
- Holds two trays per ledge
- Nesting units available
- 1" square tubular aluminum construction
- 5" Poly U swivel stem casters
- Freight Class 300

Model No.	Tray Cap	Spacing (In.)	D x L x H (In.) (mm.)		Wt. (Lbs.) (Kg.)	
<b>For 14" x 18" and 18" x 26" Trays - STD 1.5" Runner</b>						
APR1218-5/30	24	5	30 x 21 x 69	752 x 533 x 1753	39	18
APRN1218-5/30*	24	5	30 x 21 x 69	752 x 533 x 1753	40	18
<b>For 15" x 20" Trays - STD 1.5" Runner</b>						
APR1220-5/30	24	5	30 x 21 x 69	752 x 533 x 1753	38	17
APRN1220-5/30*	24	5	30 x 21 x 69	752 x 533 x 1753	39	18
<b>For 18" x 14" Trapezoid Trays/Round Trays 3.25" Runner</b>						
APRU1218-5/30	24	5	30 x 21 x 69	752 x 533 x 1753	58	26
APRUN1218-5/30*	24	5	30 x 21 x 69	752 x 533 x 1753	60	27

\*Nesting units



Tray Retrieval Rack  
APRN1220-5/30

### Adjustable Tray Drying Racks

- Three styles to hold various types of trays
- Guides spaced on 1", 1½" and 2¾" centers
- .090" guides are radiused for safety
- Tray capacity depends on type of tray
- 6" polyolefin swivel plate casters
- Freight Class 250

Model No.	No. Of Openings	Guide Spacing (In.)	D x L x H (In.) (mm.)		Wt. (Lbs.) (Kg.)	
ATR4828/3-1	3	1	28 x 51½ x 68	711 x 1308 x 1575	195	89
ATR6028/3-1.5	3	1½	28 x 63½ x 62	711 x 1613 x 1575	210	96
ATR6028/3-2.75	3	2¾	28 x 63½ x 62	711 x 1613 x 1575	210	98



Adjustable Tray Drying Rack  
ATR4828/3-1

**CAN STORAGE**

**Full Size Can Racks**

- Organize your stock room with the CSR-162 unit
- Ships set up, ready to use
- FIFO Can Rack holds 156 cans-13 cans per opening
- FIFO is first in - first out; load and empty from front
- All welded aluminum construction will never rust
- Mobile kit available factory installed for safety
- 5" Poly U plate casters, 2 swivel w/brakes and 2 rigid
- Freight Class 400



Full Size Can Racks



CSR-162



CSR-162M

Model No.	Capacity Of		D x L x H		Wt.	
	No. 10 Cans	(In.)	(In.)	(mm.)	(Lbs.)	(Kg.)
<b>Full Size Unit - Holds 6 Cans Per Opening</b>						
CSR-162	162	35 x 25 x 71	889 x 635 x 1803	60	27	
CSR-162M*	162	36 x 28 x 76	889 x 711 x 1930	72	32	
CSR-216	216	35 x 37 x 71	889 x 940 x 1803	88	40	
<b>FIFO Can Rack</b>						
CSR-156/FIFO	156	42 x 28 x 80	1067 x 1067 x 2083	200	91	
<b>Economy Can Rack</b>						
CSRE-162	162	35 x 25 x 71	889 x 635 x 1803	51	23	

\*Mobile unit



CSR-156/FIFO



CSRE-162

**Can Rack Options**

Model No.	Description
/ADJ	Adjustable Feet (each)

**Half Size Can Racks**

- Unit doubles as work table so you maximize your space
- Available with aluminum top, 304 Series stainless steel top or 3/8" Poly Top
- 5" Poly U expandable stem casters, 2 swivel with brakes and 2 rigid
- Ships set up, ready to use
- Freight Class 250

Half Size Can Racks



CSR-54  
(Open Top)



CSR-54/A  
(Aluminum Top)



CSR-54/PT  
(Poly Top)



CSR-54SS  
(Stainless Steel Top)

Model No.	Capacity Of		D x L x H		Wt.	
	No. 10 Cans	Type Of Top	(In.)	(Mm.)	(Lbs.)	(Kg.)
<b>35" Height</b>						
CSR54	54	None	35 x 28 x 35	889 x 711 x 889	47	21
CSR54/A	54	Aluminum	35 x 28 x 35	889 x 711 x 889	54	24
CSR54/PT	54	Poly Top	35 x 28 x 35	889 x 711 x 889	65	29
CSR54/SS	54	Stainless Steel	35 x 28 x 35	889 x 711 x 889	61	27
<b>42" Height</b>						
CSR72	72	None	35 x 28 x 42	889 x 711 x 1067	58	26
CSR72/A	72	Aluminum	35 x 28 x 42	889 x 711 x 1067	60	27
CSR72/PT	72	Poly Top	35 x 28 x 42	889 x 711 x 1067	72	32
CSR72/SS	72	Stainless Steel	35 x 28 x 42	889 x 711 x 1067	67	30

### Keg Storage Racks

- Sturdy, durable and designed to hold the heaviest load, Kelmax Keg Racks are the best solution for any tough job
- Designed to take the impact of a 160 lb keg being dropped onto the shelf
- Can hold 4-10 kegs
- 10 keg rack designed with two middle posts for extra support
- 2" x 1½" tubular extra heavy duty wall frame
- "E" Channel laterals allow sliding of kegs
- Increased keg storage
- 76" height standard
- Freight class 70



Keg Storage Rack  
KR8

Model No.	No. of Kegs	L x D x H		Wt.	
		(In.)	(mm.)	(Lbs.)	(Kg.)
KR4	4	42 x 17 x 76	1067 x 432 x 1990	46	21
KR6	6	60 x 17 x 76	1524 x 432 x 1990	52	23.5
KR8	8	80 x 17 x 76	2032 x 432 x 1990	62	28
KR10	10	93 x 17 x 76	2362 x 432 x 1990	48	35.5

### Keg Rack Options

Model No.	Description	D x L		Wt.	
		(In.)	(mm.)	(Lbs.)	(Kg.)
<b>Keg Rack Shelves</b>					
AKRS1760	For KR6 Rack	17 x 60	432 x 1524	46	6.8
AKRS1780	For KR8 Rack	17 x 80	432 x 2032	48	8.1
AKRS1793	For KR10 Rack	17 x 93	432 x 2362	52	9
<b>Clips For Keg Racks</b>					
KR/CLAMPS	Ties 2 Units Together	—	—	—	—
KR10/CLIPS	Additional Center Support Clips For KR10	—	—	—	—
<b>U-braces For Keg Racks*</b>					
AASUB1760	For KR6 Rack	17 x 60	432 x 1524	7	3
AASUB1780	For KR8 Rack	17 x 80	432 x 2032	9	4
AASUB1793	For KR10 Rack	17 x 93	432 x 2362	10	4.5

\*Use as 3-sided product stop between shelves.



U-brace for Keg Rack

**PRODUCE CARTS**

**Produce Stocking Cart**

- Heavy duty galvanized solid top shelf
- Galvanized square tube bottom shelf
- 5" Polyurethane plate casters, 2 swivel and 2 rigid
- Freight class 300

Model No.	Capacity		L x W x H		Wt.	
	(Lbs.)	(In.)	(mm.)	(Lbs.)	(Kg.)	
PC2244	800	51 x 22 x 36	1295 x 559 x 914	64	29	



Produce Stocking Cart  
PC2244

**Produce Crisping Carts**

- Keeps produce crisp and fresh
- Heavy duty aluminum construction
- No rust guarantee
- 5" Polyurethane swivel stem casters
- Crisping baskets sold separately
- Freight class 400

Model No.	Description	L x W x H		Wt.	
		(In.)	(mm.)	(Lbs.)	(Kg.)
APCR-729NC	Stationary	29 x 33 <sup>1</sup> / <sub>2</sub> x 72	737 x 851 x 1829	32	14
APCR-729	Mobile	29 x 33 <sup>1</sup> / <sub>2</sub> x 79	737 x 851 x 2007	43	19.5
APCR-829	8 Tier	26 <sup>1</sup> / <sub>2</sub> x 33 x 85 <sup>3</sup> / <sub>4</sub>	637 x 838 x 2184	60	27
PCB2629	Basket	29 x 26 x 8	737 x 660 x 203	5	2.5



Produce Crisping Cart  
APCR-729

Baskets  
PCB2629

**Wet Produce Cart**

- Galvanized cart
- Reversible top: lips up or down
- 5" Polyurethane plate casters, 2 swivel & 2 rigid
- Freight class 200

Model No.	Capacity		L x W x H		Wt.	
	(Lbs.)	(In.)	(mm.)	(Lbs.)	(Kg.)	
RPC2240	800	48 x 22 x 40	1219 x 610 x 1016	105	47	



Wet Produce Cart  
RPC2240



(Top Reversed)  
RPC2240

### Aluminum Meat Lug Carts

- All welded construction
- No rust guarantee
- 5" Polyurethane swivel stem casters
- Lug sold separately
- Freight class 300

Model No.	Lug Capacity	L x W x H		Wt.	
		(In.)	(mm.)	(Lbs.)	(Kg.)
ALR-1	1	25 x 16 x 19	635 x 406 x 483	10	4.5
ALR-1/H*	1	25 x 16 x 34	635 x 406 x 864	11	5
ALR-2	2	25 x 16 x 33	635 x 406 x 838	18	8
ALR-2/H*	2	25 x 16 x 39	635 x 406 x 991	19	8.5
ALR-3	3	27 x 19 x 41	686 x 483 x 1041	25	11.5
ALR-4	4	27 x 19 x 54	686 x 483 x 1372	28	12.5
ALR-6	6	27 x 19 x 69	686 x 483 x 1753	30	13.5

\* With handle



Aluminum Meat Lug Cart  
ALR-1

### Bulk Movers

- Available in two sizes: 6 or 8 bushel tubs; tub included
- Easy to clean seamless tub, just lift off the frame base
- ABM has an aluminum frame and SBM has a 16 gauge stainless steel frame
- 5" polyurethane swivel casters standard
- Freight class 300

Model No.	Capacity	L x W x H		Wt.	
		(In.)	(mm.)	(Lbs.)	(Kg.)
<b>Aluminum</b>					
ABM3	3 Bushel	29 x 22 x 32	737 x 559 x 813	24	11
ABM6	6 Bushel	36 x 22 x 36	919 x 559 x 914	33	15
ABM8	8 Bushel	40 x 22 x 36	1016 x 559 x 914	40	18
<b>Stainless</b>					
SBM3	3 Bushel	29 x 22 x 32	737 x 559 x 813	32	14
SBM6	6 Bushel	36 x 22 x 36	919 x 559 x 914	42	19
SBM8	8 Bushel	40 x 22 x 36	1016 x 559 x 914	48	21.5



Bulk Mover  
ABM6

### Multiple Compartment Ingredient Bins

- All welded aluminum frame
- 5" Poly U swivel casters
- Three heavy duty polyethylene bins included
- Freight class 250

Model No.	Description	Capacity	L x W x H		Wt.	
			(In.)	(mm.)	(Lbs.)	(Kg.)
IBIN-3	Triple Tub	36 Gal	16 1/2 x 29 x 30	419 x 736 x 762	35	16
<b>Replacement Parts For IBIN 3</b>						
TUB-1/3	Replacement Tub	12 Gal	—	—	15	7
IBIN-C1/3	Replacement Cover	—	—	—	5	2



Multiple Compartment  
Ingredient Bin  
IBIN-3

**PLATTER CARTS**

**Aluminum Universal Carts**

- Recessed shelves hold platters, pans or lugs
- Heavy duty all welded aluminum construction will not rust like chrome units
- Carts are ideal for all areas, including meat, seafood, deli and bakery
- 5" Poly U stem casters standard
- Freight class 300



Aluminum Universal Cart  
AUSC7-DP/1230

Model No.	No. Of Shelves	Spacing (In.)	W x D x H (In.) (mm.)		Wt. (Lbs.) (Kg.)	
<b>Holds Trays</b>						
AUSC4-T/43-1826	4	10	27 x 21 x 43	686 x 533 x 1092	26	12
AUSC5-T/43-1826*	5	7	27 x 21 x 43	686 x 533 x 1092	30	14
AUSC5-T/1826	5	12	27 x 21 x 67	686 x 533 x 1702	14	6
AUSC6-T/1826	6	11	27 x 21 x 67	686 x 813 x 1702	32	15
AUSC7-T/1826	7	9	27 x 21 x 67	686 x 813 x 1702	25	11
AUSC8-T/1826*	8	7	27 x 21 x 67	686 x 533 x 1702	38	17
<b>Holds Platters</b>						
AUSC4-P/43-1230	4	10	32 x 16 x 43	813 x 406 x 1092	24	11
AUSC5-P/1230*	5	7	32 x 16 x 43	686 x 406 x 1092	26	12
AUSC8-P/1230*	8	7	32 x 16 x 67	813 x 406 x 1702	40	18
<b>Holds Double Platters</b>						
AUSC7-DP/1230	7	9	32 x 28 x 67	813 x 711 x 1702	60	27

\* Will not hold Meat Lugs



AUSC8-P/1230



AUSC8-T/1826

**Platter Carts**

- All welded construction
- Guaranteed not to rust
- 5" Poly U swivel stem caster
- Freight class 300

Model No.	Tray Size (In.)	Tray Capacity	L x W x H (In.) (mm.)		Wt. (Lbs.) (Kg.)	
<b>Aluminum</b>						
APR1010-6/10	10 x 30	10	27 x 13 x 69	686 x 330 x 1753	30	14
APR1210-5/10	10 x 30	12	27 x 13 x 69	686 x 330 x 1753	32	14
APR612/38	12 x 30	6	27 x 15 x 38	686 x 330 x 965	26	12
APR1012-6/12	12 x 30	10	27 x 15 x 69	686 x 330 x 1753	30	14
APR1212-5/12	12 x 30	12	27 x 15 x 69	686 x 330 x 965	33	15
APR618/38	18 x 26	6	27 x 21 x 38	686 x 533 x 965	26	12
APR1018-6	18 x 26	10	27 x 21 x 69	686 x 533 x 1753	32	14
APR1218-5	18 x 26	12	27 x 21 x 69	686 x 533 x 1753	35	16



Platter Cart  
APR1012-6/10

### Meat Dollies

- Constructed of heavy duty aluminum
- 5" Poly U swivel plate casters
- Guaranteed not to rust
- HD Unit has 5" x 2" casters
- Freight class 150

Model No.	Capacity (Lbs.)	(In.)	L x W x H (mm.)	Wt. (Lbs.) (Kg.)	
<b>Meat Trays - All Lips Up</b>					
D2027	800	28 x 21 x 8	711 x 533 x 203	18	8
<b>Box Beef - 3 Lips Up And One Down</b>					
D1922/HD	1200	23 x 20 x 8	610 x 914 x 203	22	9
D1826/HD	1200	27 x 19 x 8	686 x 482 x 203	23	10
D2733/HD	1200	34 x 28 x 8	864 x 711 x 203	25	11



D2733/HD

D2027

Meat Dollies

### Chicken Dolly/ Wet Mover

- Great for transporting iced seafood or chicken
- Keeps product above the melting ice
- Removable drip pan standard
- Lifetime guarantee against rust
- 5" Poly U swivel stem casters
- Freight class 100

Model No.	Capacity (Lbs.)	(In.)	L x W x H (mm.)	Wt. (Lbs.) (Kg.)	
CD-1	500	28 x 21 x 12	711 x 533 x 305	24	11



Chicken Dolly CD-1

### Mixing Bowl Dolly

- Two sizes: 19" ring and 30" ring
- Designed for the toughest conditions, 800 lb capacity
- All 16 gauge Stainless Steel construction tubing with 1/4" thick ring
- Rolls on 5" polyurethane casters
- Freight class 250

Model No.	Ring Size (In.)	(In.)	L x W x H (mm.)	Wt. (Lbs.) (Kg.)	
MBD1926	19	21 x 21 x 26	533 x 533 x 660	39	18
MBD1930	19	28 x 21 x 30	711 x 533 x 761	45	20
MBD3026	30	30 x 32 x 26	762 x 533 x 660	62	28
MBD3030	30	30 x 32 x 30	762 x 840 x 761	68	30



Mixing Bowl Dolly MBD1930 (Bowl not included)

DOLLIES

**Milk Crate Dollies**

- Four sizes in Stainless Steel construction
- Pull hook available
- 4" x 1½" Poly U swivel plate casters
- Freight class 200

Model No.	No. of Stacks	L x W x H		Wt.	
		(In.)	(mm.)	(Lbs.)	(Kg.)
SSD1414	1	15 x 15 x 7	381 x 381 x 178	7	3
SSD1428	2	29 x 15 x 7	381 x 737 x 178	9	4
SSD1442	3	43 x 15 x 7	381 x 1092 x 178	10	4
SSD2828	4	29 x 29 x 7	737 x 737 x 178	11	5



SSD1428

SSD2828

Milk Crate Dollies  
(Crates not included)

**Aluminum Sheet Pan Dollies**

- Stores and transports food service trays
- Holds 18" x 26" Sheet Pans
- 5" Poly U swivel plate casters
- Freight class 300

Model No.	Capacity (Lbs.)	L x W x H		Wt.	
		(In.)	(mm.)	(Lbs.)	(Kg.)
APSD-1826	900	27 x 22 x 32	686 x 559 x 813	23	10.5
APSD-2-1826	900	27 x 22 x 32	686 x 559 x 813	26	12



APSD-2-1826

Aluminum Sheet Pan Dollies

APSD-1826



### Stocking/Utility Carts

- 1 1/4" tubing
- Heavy duty channel construction
- 5" Polyurethane casters, 2 swivel and 2 rigid
- Freight class 300

Model No.	Capacity		L x W x H		Wt.	
	(Lbs.)	(In.)	(mm.)	(mm.)	(Lbs.)	(Kg.)
ATC2036	1200	42 x 20 x 36	1067 x 508 x 914		38	17
ATC2044	1200	50 x 20 x 36	1270 x 508 x 914		45	20
ATC2036/HD	1200	42 x 20 x 36	1067 x 508 x 914		50	23



Stocking/Utility Cart  
ATC2036

### Solid Two Tier Utility Carts

- Flexible use
- Custom sizes available
- Stainless Steel construction guaranteed not to rust
- 5" Polyurethane stem casters, 4 swivel
- Freight class 250

Model No.	Capacity		L x W x H		Wt.	
	(Lbs.)	(In.)	(mm.)	(mm.)	(Lbs.)	(Kg.)
SSUC2036	600	41 x 20 x 40	1041 x 508 x 1016		58	26



Solid Two Tier Utility Cart SSUC2036

### Heavy Duty Stainless Steel Utility Carts

- 1 reinforced tube for reinforced strength under front lip of shelves
- Shelves have three sides up, one down
- 5" x 2" polyurethane plate caster
- 1,100 lb rolling capacity
- Stainless Steel caster hardware
- Made in 300 Series Stainless Steel for rust resilience
- Freight class 250

Model No.	No. of Shelves	Shelf Spacing	Shelf Size (In.)	L x W x H		Wt.	
				(In.)	(mm.)	(Lbs.)	(Kg.)
SUC1832-2	2	23 1/4	18 x 32	37 1/2 x 19 1/2 x 37	953 x 496 x 940	74	34
SUC1832-3	3	11	18 x 32	37 1/2 x 19 1/2 x 37	953 x 496 x 940	90	41
SUC2133-2	2	23 1/4	21 x 33	38 1/2 x 22 1/2 x 37	978 x 572 x 940	81	37
SUC2133-3	3	11	21 x 33	38 1/2 x 22 1/2 x 37	978 x 572 x 940	99	45
SUC2149-2	2	23 1/4	21 x 49	54 1/2 x 22 1/2 x 37	1382 x 572 x 940	99	45
SUC2149-3	3	11	21 x 49	54 1/2 x 22 1/2 x 37	1382 x 572 x 940	123	57



Heavy Duty Stainless Steel  
Utility Cart  
SUC2133-2

STOCKING CARTS

**Chrome Stocking Cart**

- All welded plated steel construction with wire top reinforced for extra strength
- 400 lb load capacity
- Great for use in customer and office areas
- Rolls easily on 5" Poly U plate casters
- Freight class 250

Model No.	No. of Shelves	W x L x H		Wt.	
		(In.)	(mm.)	(Lbs.)	(Kg.)
CWC1836-2	2	18½ x 36 x 40½	470 x 914 x 1029	35	16



Chrome Stocking Cart  
CWC1836-2

**Tubular Deck Cart**

- Heavy duty steel tubular construction
- 18" wide for easy use while customers are in store
- 5" Poly U plate casters, 2 swivel and 2 rigid
- Standard color is green powder coat. For other colors call factory
- Freight class 250

Model No.	Description	Capacity (Lbs.)	W x D x H		Wt.	
			(In.)	(mm.)	(Lbs.)	(Kg.)
TC-2	Steel	600	42 x 18 x 40	1067 x 457 x 1016	50	23



Tubular Deck Cart  
TC-2

### Chrome Flat Cart

- Great for transporting products
- Six wheel design allows for maximum maneuverability
- 5" x 1½" plate casters
- Great for use in wet area, no paint to chip
- Ships knockdown
- Freight class 250

Model No.	Capacity	W x L x H		Wt.	
	(Lbs.)	(In.)	(mm.)	(Lbs.)	(Kg.)
TCG1840-1/6	800	18½ x 40 x 41	470 x 1010 x 1041	42	16



Chrome Flat Cart  
TCG1840-1/6

### Nesting Flat Cart

- Heavy duty galvanized frame
- Units nest to save space
- 3,000 lb load capacity with 6" x 2" heavy duty Polyurethane plate casters, 2 swivel and 2 rigid
- Freight class 250

Model No.	Capacity	L x W x H		Wt.	
	(Lbs.)	(In.)	(mm.)	(Lbs.)	(Kg.)
FCN2448/G	3000	48 x 24 x 40	1219 x 610 x 1016	95	43



Nesting Flat Cart  
FCN2448/G

ACCESSORIES

**Knife Racks**

- Stainless Steel knife rack
- Comes with black insert as standard

Model No.	Insert Color	L x W x H		Wt.	
		(In.)	(mm.)	(Lbs.)	(Kg.)
SKR23	Black	12 x 2 <sup>1</sup> / <sub>2</sub> x 13 <sup>3</sup> / <sub>8</sub>	305 x 63.5 x 340	3	1



Knife rack  
SKR23

**Meat Lugs**

- Fits Kelmax Meat Lug Carts
- High impact polyurethane
- Formed base for cross stacking
- Available in gray and white
- Lids available

Model No.	Color	L x W x H		Wt.	
		(In.)	(mm.)	(Lbs.)	(Kg.)
ML-7	Gray	15 x 20 x 7	381 x 508 x 179	2 <sup>1</sup> / <sub>2</sub>	1
ML-7/LID	Gray	15 x 20 x 1	381 x 508 x 25	1	0.45
ML-8/W	White	15 x 26 x 8	381 x 661 x 203	4	2
ML-8	Gray	15 x 26 x 8	381 x 661 x 203	4	2
ML-8/LID	Gray	15 x 26 x 1	381 x 661 x 25	1	0.45



Meat Lug  
ML-8

**Platters and Trays**

- High impact polystyrene
- Ribbed for support with reinforced edges
- Shipped 12 per case

Model No.	Color	W x D		Wt.	
		(In.)	(mm.)	(Lbs.)	(Kg.)
P1224	White	12 x 24	305 x 610	28	13
P1230	White	12 x 30	305 x 762	35	16
P1826/W	White	18 x 26	457 x 660	40	18



Platters  
P1230

### Casters

There are four wheel types:

- Polyurethane
  - Tough abrasion resistant
  - Excellent floor protection and ease of rolling
  - Wide temperature range -30° F to 180° F
- Polyolefin
  - Good general use hard plastic casters
  - Good on concrete surfaces
- Soft Tread Rubber (TPR)
  - Quiet operation on floors
  - Great for tile and stone floors. Non-marking and non-staining
  - Not recommended for cooler or freezer use
- Phenolic Material
  - High temperature material for use in ovens up to 550° F



Polyurethane



Soft Tread Rubber (TPR)



Polyolefin



Phenolic Material

### Expandable Stem Casters

- Fits various posts and tubes, both round and square
- Does not need special fitting or bolts
- Great for making kitchen equipment mobile

Model No.	Description
CSQ515UEXP1"	For 1" Tube 1" Expandable Stem Poly-U 5" x 1 1/4" Wheel
CSQ515UEXP1-1/4"	For 1 1/4" Tube 1 1/4" Expandable Stem Poly-U 5" x 1 1/4" Wheel
CSQ515UEXP1-1/2"	For 1 1/2" Tube 1 1/2" Expandable Stem Poly-U 5" x 1 1/4" Wheel



Expandable Stem Caster

### High Temperature Wheels

- High temperature wheels to fit most oven racks
- 600°F intermittent use
- 475°F continuous use
- New bearing option does not need to be lubricated

Model No.	Description
CSW415HT	4" x 1 1/2" HI-Temp Oven Wheel
415HT	High Temp Wheel Only
CSW415HT/SS	4" x 1 1/2" HI-Temp Oven Wheel on Stainless Steel rig



High Temperature Wheel  
CSW415HT

### Standard Square Stem Caster

- 7/8" Square stem caster with Poly U Wheel
- Fits most pan racks

Model No.	Description
CSQ515U	SQ. STEM 5" x 1 1/2" Poly-U



Standard Square Stem Caster  
CSQ515U

CASTERS

**Rigid Casters**

- 1½" Wheels; plate size 3⅞" x 4⅞"
- Light duty capacity up to 600 lbs
- 2" Wide wheels, Plate size 4" x 4½"
- Heavy duty capacity up to 2,000 lbs

Model No.	Description
<b>3⅞" x 4⅞" Rigid Plate Caster</b>	
CRG415TPR	4" x 1½" TPR
CRG415U	4" x 1½" POLY-U
CRG515TPR	5" x 1½" TPR
CRG515U	5" x 1½" POLY-U
<b>4" x 4½" Rigid Plate Caster</b>	
CRG520O	5" x 2" POLY-O
CRG520PH	5" x 2" PHENOLIC
CRG520TPR	5" x 2" TPR
CRG520U	5" x 2" POLY-U
CRG620O	6" x 2" POLY-O
CRG620PH	6" x 2" PHENOLIC
CRG620TPR	6" x 2" TPR
CRG620U	6" x 2" POLY-U
CRG820TPR	8" x 2" TPR
CRG820PH	8" x 2" PHENOLIC
CRG820O	8" x 2" POLY-O
CRG820U	8" x 2" POLY-U



Rigid Caster

**Swivel Casters**

- 1½" Wheels plate size 3⅞" x 4⅞"
- Light duty capacity up to 600 Lbs
- 2" Wide wheels; Plate size 4" x 4½"
- Zinc fittings in the wheels and the rigs
- Heavy duty capacity up to 2,000 lbs

Model No.	Description
<b>3⅞" x 4⅞" Swivel Plate Caster</b>	
CSW415TPR	4" x 1½" TPF
CSW415U	4" x 1½" POL
CSW515TPR	5" x 1½" TPF
CSW515U	5" x 1½" POL
<b>4" x 4½" Swivel Plate Caster</b>	
CSW520O	5" x 2" POLY
CSW520PH	5" x 2" PHENC
CSW520TPR	5" x 2" TPF
CSW520U	5" x 2" POLY
CSW620O	6" x 2" POLY
CSW620PH	6" x 2" PHENC
CSW620TPR	6" x 2" TPF
CSW620U	6" x 2" POLY
CSW820TPR	8" x 2" TPF
CSW820PH	8" x 2" PHENC
CSW820O	8" x 2" POLY
CSW820U	8" x 2" POLY



Swivel Caster

- Square Tubular Dunnage Racks are an economical way to hold medium to heavy duty boxes. Use the DR Series for medium duty boxes, and for heavy boxes use the DRH and DRC Series

### Standard Tubular Dunnage Racks

- All units come with a lifetime guarantee against rust
- 1½" square aluminum tubing
- Great for general use
- Freight class 70

12" Leg (305 mm) Model No.	8" Leg (203 mm) Model No.	L x D (In.) (mm.)		Capacity (Lbs.)	Wt. (Lbs.) (Kg.)	
<b>24" Wide</b>						
DR242012	DR24208	20 x 24	508 x 610	2100	7	3
DR242412	DR24248	24 x 24	610 x 610	2100	7	3
<b>36" Wide</b>						
DR362012	DR36208	20 x 36	508 x 914	2100	8	4
DR362412	DR36248	24 x 36	610 x 914	2100	9	4
<b>48" Wide</b>						
DR482012	DR48208	20 x 48	508 x 1219	1800	10	5
DR482412	DR48248	24 x 48	610 x 1219	1800	12	5
<b>60" Wide</b>						
DR602012	DR60208	20 x 60	508 x 1524	1500	13	6
DR602412	DR60248	24 x 60	610 x 1524	1500	15	7



Tubular Dunnage Rack  
DR362012

### Heavy Wall Tubular Dunnage Racks

- Heavy wall 1½" x 1¾" rectangular aluminum tubing
- Tube spacing on 4½" centers - 5 tubes on 24" deep units
- Freight class 70

12" Leg (305 mm) Model No.	8" Leg (203 mm) Model No.	L x D (In.) (mm.)		Capacity (Lbs.)	Wt. (Lbs.) (Kg.)	
<b>36" Wide</b>						
DRH362012	DRH36208	20 x 36	508 x 914	3000	9	4
DRH362412	DRH36248	24 x 36	610 x 914	3000	11	5
<b>48" Wide</b>						
DRH482012	DRH48208	20 x 48	508 x 1219	2500	11	5
DRH482412	DRH48248	24 x 48	610 x 1219	2500	14	6
<b>60" Wide</b>						
DRH602012	DRH60208	20 x 60	508 x 1524	2000	13	6
DRH602412	DRH60248	24 x 60	610 x 1524	2000	16	7



Heavy Wall Tubular Dunnage Rack  
DRH362012

DUNNAGE RACKS

Dunnage Racks Channel Style

- Wide 4 inch "E" channel holds product more securely than standard tubular dunnage racks
- Great in coolers and freezers
- Less than 3" spacing between cross braces
- Safer and reduces product damage
- Freight class 70

12" Leg (305 mm) Model No.	8" Leg (203 mm) Model No.	L x D (In.) (mm.)		Capacity (Lbs.)	Wt. (Lbs.) (Kg.)	
<b>24" Wide</b>						
DRC242012	DRC24208	20 x 24	508 x 610	3000	9	4
DRC242412	DRC24248	24 x 24	610 x 610	3000	9	4
<b>36" Wide</b>						
DRC362012	DRC36208	20 x 36	508 x 914	3000	10	5
DRC362412	DRC36248	24 x 36	610 x 914	3000	11	5
<b>48" Wide</b>						
DRC482012	DRC48208	20 x 48	508 x 1219	2500	12	5
DRC482412	DRC48248	24 x 48	610 x 1219	2500	15	7
<b>60" Wide</b>						
DRC602012	DRC60208	20 x 60	508 x 1524	2200	15	7
DRC602412	DRC60248	24 x 60	610 x 1524	2200	18	8



Channel Style Dunnage Rack  
DRC362012

Heavy Duty Mobile Dunnage Racks

- "E" Channel Style Only
- Standard with handle gussets
- 2,000 lb rolling capacity
- 6" Poly-O casters, 2 rigid, 2 swivel with brake
- All swivel standard for better movement
- Overall height 9", rolls under standard shelving
- Freight class 70

Model No.	L x D (In.) (mm.)		Wt. (Lbs.) (Kg.)	
DRC2424MHD	24 x 24	610 x 610	29	13
DRC3624MHD	24 x 36	610 x 914	36	16
DRC4824MHD	24 x 48	610 x 1219	45	20
Handles		Description		
/H20		20" Handle		
/H24		24" Handle		



Heavy Duty Mobile Dunnage Rack  
DRC3624MHD/H24

Wire Display Stand

- Designed to handle 5 gallon pails
- Great for use with chemicals in dishrooms
- K2023 is ideal for tight storage areas in corners, under sinks and dish tables
- Easy to clean under
- Also can be used as a spot merchandiser

Model No.	W x L x H (In.)	Capacity # 5 Gallon Pails	Wt. (Lbs.)
K1014	10 x 14 x 8	1	4
K1424	14 x 24 x 8	2	6
K1233	12 x 33 x 8	3	7
K2023	20 x 23 x 8	4	7



K1014



K1223

Wire Display Stands



### Steel Hand Trucks

- Beveled plate and heavy duty steel construction
- Freight class 100

Model No.	Handle Type	Wheel Type	Capacity (Lbs.)	Wt. (Lbs.) (Kg.)	
HT2-SP	Double Handle	Semi Pneumatic	500	42	19
HTL-SP	Loop Handle	Semi Pneumatic	500	42	19



HTL-SP



HT2-SP

Steel Hand Trucks

### Steel Bread Tray Hand Truck

- 65" tall frame ideal for moving bulky items with high loads
- 3/4" pipe frame and two handles
- Shovel nose with extended toe plate can carry larger loads
- Nose plate is 19" w x 14" d
- Freight class 100

Model No.	Handle Type	Wheel Type	Capacity (Lbs.)	Wt. (Lbs.) (Kg.)	
HTH2-SP-EXT	Two Handle	Semi Pneumatic	800	34	16



Steel Bread Tray Hand Truck  
HTH2-SP-EXT

### Push Off Hand Trucks

- Foot operated push bar slides cases off the plate
- Keeps cases from falling over
- Tall back holds more product
- Freight class 100

Model No.	Handle Type	Wheel Type	Capacity (Lbs.)	Wt. (Lbs.) (Kg.)	
<b>Steel Push Off Hand Truck - Pipe Construction</b>					
HT/KO-SP	Pistol Grip	Semi Pneumatic	800	45	16
<b>Steel Push Off Hand Truck - Tube Construction</b>					
HT/KO2-SP	Loop Handle	Semi Pneumatic	600	35	16



HT/KO-SP



HT/KO2-SP

Push Off Hand Trucks

### Aluminum Hand Truck

- Aluminum hand truck is a light weight unit which makes for easy use on trucks and store use
- 600 lb Load capacity
- Freight class 100

Model No.	Handle Type	Wheel Type	Capacity (Lbs.)	Wt. (Lbs.) (Kg.)	
HTL/AL-SP	Loop Handle	Semi Pneumatic	600	15	7



Aluminum Hand Truck  
HTL/AL-SP

**U BOATS**

**16" Diamond Deck U Boats**

- Heavy duty 14 gauge diamond deck construction
- Ideal for narrow, busy aisles
- 6-Wheel design offers maximum maneuverability
- 4" Poly u swivel plate casters and 8" heavy duty Polyurethane rigid plate center casters
- Tall removable handles hold the load securely
- Garment rack or removable shelf available
- Freight class 70



16" Diamond Deck U Boat  
UBD1660

**18" And 24" Deck U Boats**

- Heavy duty all steel dual channel construction
- 18" U-boats ideal for narrow, busy aisles
- 24" Wide provides maximum load capacity
- 6-Wheel design offers maximum maneuverability
- Tall removable handles hold the load securely
- Garment rack or removable shelf available
- Freight class 70

Model No.	Capacity	W x D		Wt.	
	(Lbs.)	(In.)	(mm.)	(Lbs.)	(Kg.)
<b>18" Deck U-Boats</b>					
UB1860	2000	60 x 18	1524 x 457	105	47
<b>24" Deck Heavy U-Boats</b>					
UB2460	2000	60 x 24	1524 x 610	120	54



18" Deck U Boat UB1860

**U-Boat Options**

Model No.	Description	Wt.	
		(Lbs.)	(Kg.)
/B	Bumper Set Of 4	2	1
/GR60	Garment Bar	4	1.5
/RS48	Removable Shelf For 48" Unit	26	12
/RS60	Removable Shelf For 60" Unit	28	13

**Pallet Jack**

- 5,500 lb Load capacity
- Leak proof pump
- Overload valve
- Six month warranty
- 2.9" Lowered height
- Freight class 150

Model No.	Capacity	L x W		Wt.	
	(Lbs.)	(In.)	(mm.)	(Lbs.)	(Kg.)
PJT2748	5500	48 x 27	1219 x 686	175	79



Pallet Jack  
PJT2748

**Knock Down Mat Cart**

- Stop hauling mats by hand
- Galvanized unit holds up to 10 mats
- Rolls on 5" x 1½" Poly U casters all swivel
- Unit can also hold 55 gallon plastic trash can
- Smaller frame for easier storage
- Freight class 70

Model No.	(In.)	(mm.)	(Lbs.)	(Kg.)
MMC2530/KD	30 x 25¼ x 44¼	762 x 541 x 1124	39	38



**All Welded Mat Cart**

- All welded galvanized unit holds up to 10 mats
- Rolls on 5" x 1½" Poly U casters all swivel
- Freight class 250

Model No.	(In.)	(mm.)	(Lbs.)	(Kg.)
MMC2842	28 x 42 x 40	711 x 1067 x 1016	39	38



All Welded Mat Cart  
MMC2842

RECEIVING DESKS

Receiving Desk

- Available as stationary or mobile units
- Unit comes standard with lockable lift up storage area
- Organize your receiving area
- Powdercoated finish on steel
- Units ship ready to use
- Freight class 150

Model No.	Description	L x W x H		Wt.	
		(In.)	(mm.)	(Lbs.)	(Kg.)
RDS	Stationary	24 x 24 x 48	610 x 610 x 1219	45	20
RDM	Mobile	24 x 24 x 51	610 x 610 x 1295	51	23



Mobile Receiving Desk RDM



Stationary Receiving Desk RDS

Open Foreman Shop Desk

- Large writing area with one locking drawer
- Top cubby hole storage area
- One bottom shelf
- Ships KD (Knockdown)
- Freight class 150

Model No.	Description	(In.)	(mm.)	(Lbs.)	(Kg.)
RFDO	Open Foreman	29 x 34 <sup>1</sup> / <sub>2</sub> x 52	737 x 876 x 1321	105	48



Open Foreman Shop Desk RFDO

Wall Mount Receiving Desk

- Unit comes standard with lockable lift up storage area
- Ideal for organization of storage area
- Powdercoated finish on steel
- Freight class 150

Model No.	Description	(In.)	(mm.)	(Lbs.)	(Kg.)
RD-WM	Wall Mount	24 x 24 x 12	610 x 610 x 305	35	16



Wall Mount Receiving Desk RD-WM

- Ships set up ready to use
- Powder coated beige finish
- 4 door styles
- Height includes 6" leg

### Two Door Lockers

- Doors are 36" high
- Freight class 100

Model No.	Depth (In.)	D x W x H (In.)	Wt. (Lbs.)
EL/2/15	15	15 x 12 x 78	74
EL/2/18	18	18 x 12 x 78	78



Two Door Locker EL2

### Three Door Lockers

- Doors are 24" high
- Freight class 100

Model No.	Depth (In.)	D x W x H (In.)	Wt. (Lbs.)
EL/3/15	15	15 x 12 x 78	78
EL/3/18	18	18 x 12 x 78	80



Three Door Locker EL3

### Five Door Lockers

- Doors are 12" high
- Freight class 100

Model No.	Depth (In.)	D x W x H (In.)	Wt. (Lbs.)
EL/5	12	12 x 12 x 66	78
EL/5/15	15	15 x 12 x 66	84



Five Door Locker EL5

### Six Door Lockers

- Doors are 12" high
- Freight class 100

Model No.	Depth (In.)	D x W x H (In.)	Wt. (Lbs.)
EL/6	12	12 x 12 x 78	78
EL/6/15	15	15 x 12 x 78	85
EL/6/18	18	18 x 12 x 78	88

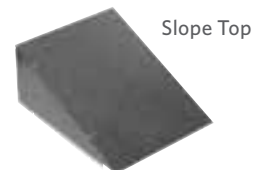


Six Door Locker EL6/15

### Locker Options

- Add suffix to locker model number

Model No. Suffix	Description
/ST1	Slope Top One Wide
/ST3	Slope Top Three Wide
/BASE1	Enclosed Base One Wide
/BASE3	Enclosed Base Three Wide
/GANG2	For 2 Unit Lockers Together
/GANG3	For 3 Unit Lockers Together



**TERMS & CONDITIONS****Order Terms and Conditions**

- Orders can be submitted via EDI, email or fax and are subject to acceptance by the factory.
- Credit card orders are accepted.
- All prices, specifications and discounts are subject to change without notice.
- Payment terms are net 30, unless otherwise stated for established accounts.
- Accounts will be established once satisfactory credit references are confirmed.
- Any applicable federal, state, or local sales tax will be added to the prices.
- We will not break cartons, where applicable.
- Possession of price list does not constitute an offer to sell.

**Minimum Orders**

- Minimum order is \$150.00 net.
- A \$35.00 service charge may be added for orders less than minimum.

**Quotations and Custom Fabrication**

- Quotations are valid for 30 days, unless otherwise stated.
- Drawings for custom items must be signed and will be accepted as correct. Any errors arising from same will be the responsibility of the customer.
- Made to order items are not returnable.

**FOB Shipping Points**

- FOB locations are by brand:
  - AMCO, ISS, LPI, Freestyle: Covington, GA
  - Kelmax: Stone Mountain, GA, Valencia, CA
  - Universal Stainless: Aurora, CO
- We reserve the right to split orders based on the FOB shipping point.

**Freight Terms and Conditions**

- Freight, service and handling charges are not subject to discount.
- Freight carriers will be chosen by the factory unless Purchase Order specifies customer carrier and includes Prepaid & Add with third party billing address
- While Seller will use all reasonable commercial efforts to maintain the delivery date acknowledged or quoted by the Seller, all shipping dates are approximates.
- We are not responsible for any delays in delivery which are beyond our control such as fires, strikes, floods, delays in transportation or any contingencies of similar character.
- Freight claims for damages are the responsibility of the customer and all claims must be filed by the customer with the carrier promptly.
- All claims for shortages must be brought to our attention within five (5) days from the date the merchandise is received.
- Kelmax Freight Classes are based on descriptions and generalizations provided by the National Motor Freight Traffic Association, January 2007 catalog. These classes are subject to interpretation by shipper and carrier.

**Special Handling Charges**

- Customers will be billed for trucking company charges that are due to special requests made by the customer, including:
  - Notifying customer before making a delivery
  - Requiring a Lift Gate Truck
  - Making deliveries during specific hours

**Return Policy**

- The minimum value of returned merchandise must be \$100 net
- Contact the factory for written approval to return merchandise
- Merchandise authorized to be returned must be shipped prepaid and is subject to a 25% restocking charge
- Returned goods must be received within 30 days of purchase
- Returned merchandise must be returned in the original, unopened and resalable packaging.
- All merchandise must have a Return Goods Authorization number to assure proper credit and must be noted on the shipping label and bill of lading.
- Certain products, such as those made to order, are not returnable. Contact Customer Service for the policy concerning specific products.

**Cancellations**

- Cancellations are not accepted on orders in transit or on custom equipment in production

**Warranty**

- Contact factory for Warranty information.

Note: Due to continuous product improvements, specifications and prices are subject to change.

EXPECT MORE



**STORAGE PRODUCTS GROUP**

SPG International, LLC  
11230 Harland Drive NE  
Covington, GA 30014  
877-503-4SPG (4774)  
[www.spgusa.com](http://www.spgusa.com)